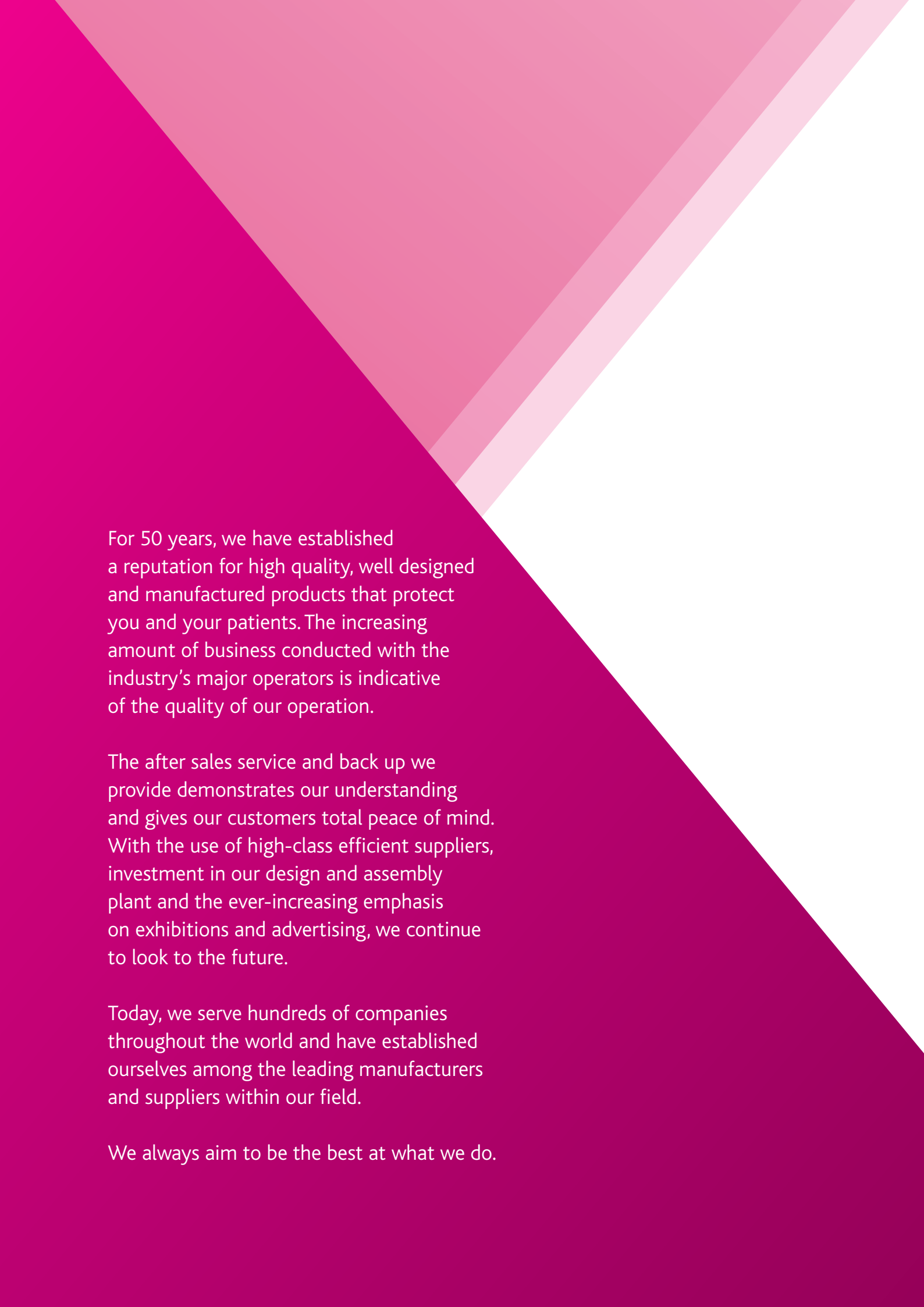




Product portfolio

Issue 28



For 50 years, we have established a reputation for high quality, well designed and manufactured products that protect you and your patients. The increasing amount of business conducted with the industry's major operators is indicative of the quality of our operation.

The after sales service and back up we provide demonstrates our understanding and gives our customers total peace of mind. With the use of high-class efficient suppliers, investment in our design and assembly plant and the ever-increasing emphasis on exhibitions and advertising, we continue to look to the future.

Today, we serve hundreds of companies throughout the world and have established ourselves among the leading manufacturers and suppliers within our field.

We always aim to be the best at what we do.



Suspension systems

- 2 Track system for overhead shields and lamps**
- 2 3001/TC – Ceiling track and carriage
- 3 Installation aids for shields and lamps**
- 3 300/P/012 – Ceiling void anchorage mount
- 3 300/P/004 – Ceiling mounting plate
- 3 300 – Ceiling column with twin pivots
- 3 Monitor suspension systems**
- 3 333 – Suspension systems for flat screen monitors



Imaging accessories

- 22 Mobile holders for DR panels and cassettes**
- 22 1330 – Mobile DR detector and cassette holder
- 23 1305/8/1 – Mobile DR detector and cassette holder
- 23 1305/3/1 – Mobile cassette holder
- 23 Positioning aids**
- 23 1700/PC – Plastic coated foam pads
- 24 1701 – Sandbags
- 24 Film markers**
- 24 1206 – Radiopaque rules
- 25 Patients chair**
- 25 1501/D – Patients imaging chair
- 25 Mobile pedestal**
- 25 1340/3 – Mobile pedestal for tableside controls
- 25 1340/3/LR – Mobile pedestal with attached radiation shield



X-ray shielding

- 4 Overhead radiation shields**
- 5 354 – Upper body radiation shields - with a patient contour corner cut-out
- 5 354 – Upper body radiation shields - without a corner cut-out
- 5 351 – Upper body radiation shields - with a patient contour corner cut-out
- 5 351 – Upper body radiation shields - without a corner cut-out
- 6 350 – Eyes and thyroid radiation shields
- 6 Overhead radiation shields**
- 6 308 – Overhead flexible lead shield
- 6 Radiation shields and lamps - complete systems**
- 7 350 – Eyes and thyroid shields and lamp combinations
- 7 351 – Upper body shields and lamp combinations
- 7 354 – Upper body shields and lamp combinations
- 8 Mobile radiation shields**
- 8 303 – Mobile protective shield
- 8 310/B-3 – Height adjustable mobile shield
- 8 317 – Flexible protective side panel
- 9 326/05 – Height adjustable over-table shield
- 9 314/05 – Flexible panel mobile shields
- 10 Table mounted lower body shields**
- 10 312 – Table shields with a double friction joint
- 12 312 – Table shields with single friction joint
- 14 312 – Top shield options and replacements
- 14 Wall racks for table mounted lower body shields
- 14 Mobile racks for table mounted lower body shields
- 15 312 – Collision resilient table mounted lower body shields
- 16 313 – Head end table shields
- 17 311/TC – Upper foot end table shield
- 17 Radiation shielding materials**



Protective clothing

- 26 X-ray protective clothing**
- 26 Order guide and colour guide
- 27 907 – LytaType double sided apron
- 28 905 – LytaType wrap-around coat
- 29 903 – LytaType wrap-around coat
- 30 910 – LytaType half back apron
- 31 909 – LytaType cross back apron
- 31 911 – LytaType cross back apron
- 32 915 – LytaType jacket (vest)
- 32 919 – LytaType kilt (skirt)
- 33 917 – LytaType double-sided short top apron
- 33 921 – LytaType demi apron
- 33 921-V – LytaType demi apron
- 34 951/05 – Thyroid collar
- 34 953/05 – Thyroid collar
- 34 278 – Ovary shields
- 34 299 – T shape gonad shields
- 35 265 – Radiation protective glasses
- 35 Apron storage racks**
- 35 100 – Multifunction apron wall console
- 36 102/C – Mobile swivel arm apron rack
- 36 100 – Kilt / skirt hooks
- 36 103 – Mobile apron rail



Operating lamps

- 18 Operating and examination lamps**
- 19 Additional sterilisable handle
- 19 LED 130F – Focusable LED examination lamps
- 19 LED 150F – Focusable LED examination and small operating lamps
- 20 Mobile LED 2SC/3SC/130F
- 20 LED 2SC – Single colour LED minor operating lamp
- 21 LED 2MC – Multi colour LED minor operating lamp
- 21 LED 3SC – Single colour surgical LED lamp
- 21 LED 3MC – Multi colour surgical LED lamp
- 21 LED 300 DF – Single colour surgical LED lamp





LED2 and 354/P/76-0031



Suspension systems

Our suspension systems are in use worldwide and safely support numerous medical devices

Including; radiation protective shields, lamps, monitors, contrast injectors, video cameras and x-ray equipment control consoles, either alone or in combination. Customised solutions are also tailored to suit specific requirements.

The sturdy suspension arms used comprise a 95 cm or 75 cm extension arm with a 91 cm spring arm, for weight loads up to 18 kg and provide movement flexibility over a wide area. A patented safety collar prevents separation of the supported device, while the design of the twin pin steel ceiling column ensures the maximum level of safety when the assembly of one or two devices is stationary mounted on the ceiling, or attached to the carriage in our ceiling track.

Our patented ceiling track has a unique profile that holds an optional cable management system, where signal and supply cables are enclosed within an integrated energy chain. This arrangement eliminates the need for an unsightly cable festoon system where external sliding cable hangers restrict movement. The enhanced strength of the track enables two independently movable carriages to be incorporated with each carrying a ceiling column with two fully loaded suspension arms.

Systems are UL classified, manufactured for safety and essential performance to international standard IEC 60601-1 3rd Edition, and CE certified to EU Regulation 2017/745 concerning medical device.



Track system for overhead shields and lamps Model 3001

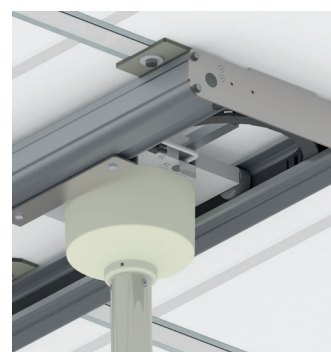
3001/TC – Ceiling track and carriage (new track design patented by Kenex)

Please note: model 3001/TC/250 track and carriage is included with some radiation shields. See product codes ending -0031 on pages 5 and 6 and other devices on page 7.

Heavy duty aluminium tracks supplied with a smooth running carriage.

- Shields with a ceiling column, i.e., 354/P/76-001 can be fixed to a carriage.
- 2 carriages can be fitted to provide independent movement of up to 4 devices.
- Optional cable management system (energy chain) for lamps or monitors etc.
- The cable management fits tidily within the track and eliminates hanging cables.
- Design simplifies installation to Unistrut (or equivalent) ceiling channels.

Description	Product code
250 cm long ceiling track plus 1 carriage	3001/TC/250
420 cm long ceiling track plus 1 carriage	3001/TC/420
Optional extras	
Extra carriage (maximum 2 per track)	3001/3.25
Energy chain (per carriage) for 250 cm long tracks	3001/TC/250/EC
Energy chain (per carriage) for 420 cm long tracks	3001/TC/420/EC



3001/TC track with cable management (energy chain)
(Attached vertical column not included)

Installation aids for shields and lamps

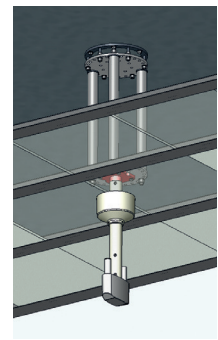
Model 300

300/P/012 – Ceiling void anchorage mount

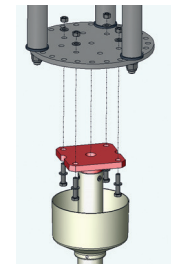
This support structure is designed for installation in the space between a suspended ceiling and a solid ceiling above. Maximum distance: 90 cm. (Column not included).

- Supplied disassembled so alterations can be made to suit the exact distance.
- Once assembled, installed and adjusted it provides an upright and solid platform.

Description	Product code
Ceiling anchorage mount	300/P/012



300/P/012

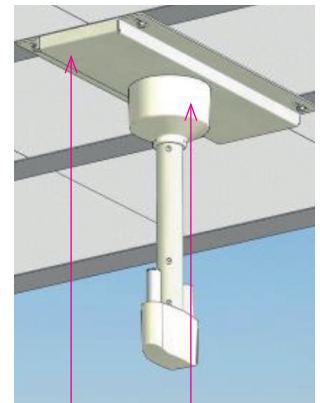


300/P/004 – Ceiling mounting plate

This mounting plate provides an effective support for the static installation of the ceiling column supplied with shields, lamps and monitor suspension systems.

- The plate can be fixed above or below a suspended ceiling.

Description	Product code
73.5 x 34 x 3.8 cm steel mounting plate, (column not included)	300/P/004



300/P/004

300/COLUMN-2

300 – Ceiling column with twin pivots

Description	Product code
80 cm long + 1 pivot electrically wired for arm and lamp	300/COLUMN-2
Other lengths 60 and 100 cm with the same specification	300/COLUMN/60 or 100

Monitor suspension systems

Model 333

333 – Suspension systems for flat screen monitors with a 5-10 kg weight range

- 186 cm reach extension/spring arm and monitor holder with 100 mm VESA mount.
- Supplied with 80 cm long twin pivot column with 60 or 100 cm lengths available.
- External cabling only.

Description	Product code
Stationary system	
Monitor holder, suspension arm and fixed ceiling column	333/1/510/001
Ceiling track system	
Monitor holder, arm, column, 250 cm track & carriage	333/1/510/0031
Wall mounted system	
Monitor holder, arm and wall fixing bracket	333/1/510/005
Combined system	
Monitor holder and arm, fit onto an existing ceiling column	333/1/510/006

Model 333/1/510/001 can be used with an existing track. Model 333/1/510/006 can be used with a shield.



333/1/510/0031



X-ray shielding

Our comprehensive range of x-ray shielding equipment significantly reduces secondary radiation exposure to staff during all applications.

The installation of ceiling suspended lead acrylic or lead glass shields minimise dose to the head, lens of the eye and upper body, and importantly provide instant access to the patient in an emergency. Tableside mounted shields protect the lower body and extremities and when combined, provide a safe and effective zone of occupancy. Mobile over-table and alongside table versions are also available.

3D Computer-aided design (CAD) files to assist with room planning and layout are available on request.

354/P/76-001

> Overhead radiation shields Models 354/351/350/308

Kenex radiation shields - provide optimal protection

Stationary installation

Protective shields for static installation on the ceiling are supplied with a suspension arm and an 80 cm long ceiling column as standard, with other lengths of 40 cm, 60 cm and 100 cm available. The suspension arm comprises an extension and spring arm combination with a combined reach of 186 cm. The ceiling column has a spare pivot, equipped with an internal electrical connector, for mounting a second suspension arm and another device; such as the lamp illustrated.

Movable installation

Shields for guidance across the ceiling are additionally supplied with a 250 cm long heavy duty aluminium ceiling track with a movable carriage. Track mounted devices can be moved and positioned in the working area or parked up to 5.9 meters away. An optional second carriage provides independent movement of further attached devices, such as injectors, monitors, lamps or extra shields.



354/P76/LED130F-0031



354 – Upper body radiation shields

With a patient contour corner cut-out

- Material: transparent lead acrylic, lead equivalent 0.5 mm.
- Portrait orientation, but central ball and socket joint provides rotational and tilting movement.

Description	Product code
76 cm high x 61 cm wide shield with a suspension arm and ceiling column	354/P/76-001
76 x 61 cm shield with arm, column and 250 cm heavy duty alloy ceiling track	354/P/76-0031
Option: flexible 0.5 mm lead panels fitted around lower profile	354/P/LR



354/P/76-001

354/P/LR

354 – Upper body radiation shields

Without a corner cut-out

- Material: transparent lead acrylic, lead equivalent 0.5 mm.
- Portrait orientation, but central ball and socket joint provides rotational and tilting movement.

Description	Product code
76 cm high x 61 cm wide shield with a suspension arm and ceiling column	354/76-001
76 x 61 cm shield with arm, column and 250 cm heavy duty alloy ceiling track	354/76-0031
Option: flexible 0.5 mm lead panels fitted across 61 cm width	354/LR/61
40 cm high x 50 cm wide shield with a suspension arm and ceiling column	354/45-001
40 x 50 cm shield with arm, column and 250 cm heavy duty alloy ceiling track	354/45-0031
Option: flexible 0.5 mm lead panels fitted across 50 cm width	354/LR/50



354/76-001

351 – Upper body radiation shields

With a patient contour corner cut-out

- Material: transparent lead acrylic, lead equivalent 0.5 mm.
- Landscape orientation.

Description	Product code
60 cm high x 80 cm wide shield with a suspension arm and ceiling column	351/P/68-001
60 x 80 cm shield with arm, column and 250 cm heavy duty alloy ceiling track	351/P/68-0031
Option: flexible 0.5 mm lead panels fitted around lower profile	351/P/LR



351/P/68-001

351 – Upper body radiation shields

Without a corner cut-out

- Material: transparent lead acrylic, lead equivalent 0.5 mm.
- Landscape orientation.

Description	Product code
60 cm high x 80 cm wide shield with a suspension arm and ceiling column	351/68-001
60 x 80 cm shield with arm, column and 250 cm heavy duty alloy ceiling track	351/68-0031
Option: flexible 0.5 mm lead panels fitted across 80 cm width	351/LR/80
40 cm high x 50 cm wide shield with suspension arm and ceiling column	351/45-001
40 x 50 cm shield with arm, column and 250 cm heavy duty alloy ceiling track	351/45-0031
Option: flexible 0.5 mm lead panels fitted across 50 cm width	351/LR/50



351/68-001

> Overhead radiation shields continued

350 – Eyes and thyroid radiation shields

- Material: Lead glass, with minimum 2.2 mm lead equivalent.
- Fitted flexible lower curtain: lead equivalent 0.5 mm.

Description	Product code
40 cm high x 50 cm wide shield with a suspension arm and ceiling column	350/45-001
40 x 50 cm shield with arm, column and 250 cm heavy duty alloy ceiling track	350/45-0031
30 cm high x 40 cm wide shield with a suspension arm and column	350/34-001
30 x 40 cm shield with arm, column and 250 cm heavy duty alloy ceiling track	350/34-0031



350/45-001

308 – Overhead flexible lead shield

Overlapping panels with a fold-up centre section retained by a press stud.

- Material: flexible 0.5 mm Pb equivalent lead vinyl.
- Size: 50 cm high x 100 cm wide.
- Ceiling model has an 80 cm long ceiling column. 60 & 100 cm lengths are optional.

Other sizes available on request.

Description	Product code
Shield with a suspension arm and ceiling column	308/50100-001
Shield with a suspension arm and wall mounting bracket	308/50100-005



308

For track systems please see page 2.

> Radiation shields and lamps - complete systems

Models 350/351/354

Static ceiling mounted or ceiling track mounted radiation shields and lamp combinations

All our lamps have daylight characteristics, light field focussing, dimming with on/off switch, sterilisable handle, power supply unit and a 950/910 mm suspension arm. Model 350 protective shields include a 2.2 mm lead equivalent glass window with an attached 0.5 mm Pb flexible curtain. Models 351 and 354 shields include 0.5 mm lead equivalent transparent acrylic with an optionally attached 0.5 mm Pb flexible curtain.

All shields are supplied with a suspension arm and an 80 cm long twin pivot ceiling column as standard. Other lengths of 60 cm and 100 cm are available as a no cost option.

See page 4 for further shield details and page 18 for lamps. For mounting systems please see page 2 and 3.

350 – Eyes and thyroid shields and lamp combinations

Stationary system: with a fixed ceiling column

Description	Product code
40 x 50 cm shield, static column and lamp: LED 130F	350/45/LED130F-001
40 x 50 cm shield, static column and lamp: LED 150F	350/45/LED150F-001
40 x 50 cm shield, static column and lamp: LED 300 DF	350/45/LED3DF-001

Movable solution: with ceiling column and 250 cm HD aluminium ceiling track

Description	Product code
40 x 50 cm shield, column, ceiling track and lamp: LED 130F	350/45/LED130F-0031
40 x 50 cm shield, column, ceiling track and lamp: LED 150F	350/45/LED150F-0031
40 x 50 cm shield, column, ceiling track and lamp: LED 300 DF	350/45/LED3DF-0031



350

351 – Upper body shields and lamp combinations

Stationary system: with a fixed ceiling column

Description	Product code
60 x 80 cm shield, static column and lamp: LED 130F	351/P68/LED130F-001
60 x 80 cm shield, static column and lamp: LED 150F	351/P68/LED150F-001
60 x 80 cm shield, static column and lamp: LED 300 DF	351/P68/LED3DF-001

Movable solution: with ceiling column and 250 cm HD aluminium ceiling track

Description	Product code
60 x 80 cm shield, column, ceiling track and lamp: LED 130F	351/P68/LED130F-0031
60 x 80 cm shield, column, ceiling track and lamp: LED 150F	351/P68/LED150F-0031
60 x 80 cm shield, column, ceiling track and lamp: LED 300 DF	351/P68/LED3DF-0031



351

354 – Upper body shields and lamp combinations

Stationary system: with a fixed ceiling column

Description	Product code
76 x 61 cm shield, static column and lamp: LED 130F	354/P76/LED130F-001
76 x 61 cm shield, static column and lamp: LED 150F	354/P76/LED150F-001
76 x 61 cm shield, static column and lamp: LED 300 DF	354/P76/LED3DF-001

Movable solution: with ceiling column and 250 cm HD aluminium ceiling track

Description	Product code
76 x 61 cm shield, column, ceiling track and lamp: LED 130F	354/P76/LED130F-0031
76 x 61 cm shield, column, ceiling track and lamp: LED 150F	354/P76/LED150F-0031
76 x 61 cm shield, column, ceiling track and lamp: LED 300 DF	354/P76/LED3DF-0031

For operating lamps please see page 18.



354



Suspension systems



X-ray shielding



Operating lamps



Imaging accessories



Protective clothing

Mobile radiation shields Models 303/310/317/326/314

303 – Mobile protective shield

Solid panel design: 2.24 mm lead core face in plastic laminate edged in satin aluminium with 2 mm Pb equivalent clear lead glass window.

Standard mobile shields

Fitted with 30 cm high x 40 cm wide window

Description	Product code
Standard shield 200 cm high x 75 cm wide	303/B2/75
Standard shield 200 cm high x 90 cm wide	303/B2/90

Panoramic mobile shield

Fitted with 60 cm high x 90 cm wide window

Description	Product code
Panoramic shield 200 cm high x 90 cm wide	303/B3/90



303/B2/90

303/B3/90

310/B-3 – Height adjustable mobile shield

Original Kenex design exceeds the demands of professionals.

- Ideal for use in confined areas close to the table side.
- The counterbalanced lead acrylic window can be raised in an instant or lowered to gain access to the patient.
- Optional full width rail can be used for equipment hand controls.
- Occupies very little space when not in use.

Window 70 cm wide (0.5 mm Pb equivalent): height range 115 - 188 cm.
Lower steel panel 78 cm wide (1.0 mm Pb equivalent).

Description	Product code
Height adjustable shield	310/B-3
Optional rail: 10 x 25 x 769 mm	310/3.1
Optional rail: 8 x 25 x 769 mm	310/9.1



310/B-3

317 – Flexible protective side panel

A flexible curtain on a double-jointed pivotal arm can be factory fitted to the side, or to both sides of the above mobile shield model 310/B-3.

- One curtain, when fully extended increases the shield width by 68 cm.
- Pivotal arm and curtain can swivel round to form a curved side wing.
- Flexible 0.5 mm curtain is 85 cm long.
- Curtain folds across the front when not in use.

Description	Product code
Protective side panel (per side)	317/05-01



317

326/05 – Height adjustable over-table shield

All the attributes of ceiling and table mounted shields in one mobile unit.

- Creates a safe working zone.
- Significantly reduces exposure to radiation.
- The counterbalanced lead acrylic window can be positioned over the patient and height adjusted to suit the table.
- A flexible curtain is suspended from the cantilevered widow and does not impede C-arm movements.
- The lower sliding curtain may be extended towards the tableside to form a continuous barrier.

Window: 50 x 116 cm, 0.5 mm Pb equivalent, height range 138-168 cm.

Curtain: 45 - 80 cm wide x 80 cm high (0.5 mm Pb equivalent).

Description	Product code
Over-table mobile shield	326/05



326/05



314/05 – Flexible panel mobile shields

Mobile panel is height adjustable with spring assistance.

- Height range: 85 cm to 120 cm.
- Single flexible panel model is 70 cm wide x 60 cm high.
- Double panel version has fixed extra protection below.
- Lead equivalent: 0.5 mm.

Description	Product code
Single flexible panel mobile shield	314/05-01
Double flexible panel mobile shield	314/05-02



314/05-01



314/05-01



314/05-02



Suspension systems



X-ray shielding



Operating lamps



Imaging accessories



Protective clothing

Table mounted shields with double friction joint Model 312

Table mounted lower body shields with double friction joint

Shields with a double-jointed pivotal arm can be moved laterally towards the patient or swivelled away from the table to form a 63 cm wide 0.5 mm Pb protective wing. The central self-adjusting friction joint ensures that it remains in the desired position. Shields have 70 cm high full width flexible curtains that conform around C-arm equipment without gaping. **Shields with overlapping panels are a no cost option.**

- Kenex shields can be used on both sides of the table and fit onto 25 mm high tableside accessory rails with a thickness range from 7.7 mm to 10 mm.
- 78 cm and 92 cm wide shields are supplied for attachment to 25 mm high tableside rails, but can also be configured on site to fit onto 29 mm high rails.



312/E-022

312 – Table shields

114 cm wide with a double friction joint

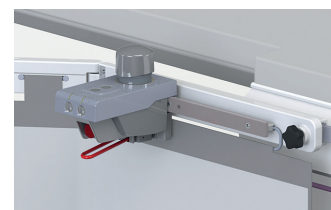
- All 114 cm shields have a 35 cm long accessory rail to keep equipment controls close to hand and the curtain behind provides extra protection. The rail is available in two sizes.
- These shields can also overhang the tableside rail to be positioned nearer the head end.

Description	With 350 x 10 x 25 mm accessory rail	With 350 x 7.7 x 25 mm accessory rail
One piece table shield with a 57 cm wide fold-down top shield	312/E-022	312/E-022/8
Alternative model with overlapping curtain panels	312/E-022/P	312/E-022/8P
One piece table shield with a 57 cm wide lift-off top shield	312/E-021	312/E-021/8
Alternative model with overlapping curtain panels	312/E-021/P	312/E-021/8P
One piece table shield without a top shield	312/E-020	312/E-020/8
Alternative model with overlapping curtain panels	312/E-020/P	312/E-020/8P
Two piece collision resilient shield with a 57 cm lift-off top*	312/E-023	312/E-023/8

*The pivotal arm of 312/E-023 moves up if struck from below by a C-arm. See page 15.



312/E-022



Accessory rail

92 cm wide with a double friction joint

- All 92 cm wide shields fit onto 25 mm high tableside rails, but can also be configured on site to fit onto tables with 29 mm high rails.

Description	Product code
One piece table shield with a 57 cm wide fold-down top shield	312/E-012
Alternative model with overlapping curtain panels	312/E-012/P
One piece table shield with a 57 cm wide lift-off top shield	312/E-011
Alternative model with overlapping curtain panels	312/E-011/P
One piece table shield without a top shield	312/E-010
Alternative model with overlapping curtain panels	312/E-010/P
Two piece collision resilient shield with a 57 cm lift-off top*	312/E-013

*The pivotal arm of 312/E-013 moves up if struck from below by a C-arm. See page 15.



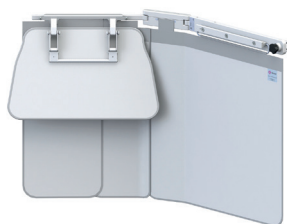
312/E-012

312 – Table shields

114 cm wide with a double friction joint



312/E-022



312/E-022/P



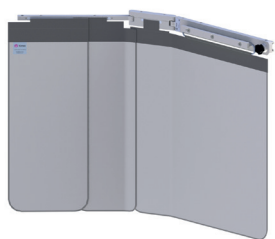
312/E-021



312/E-021/P



312/E-020



312/E-020/P



312/E-023

92 cm wide with a double friction joint



312/E-012



312/E-012/P



312/E-011



312/E-011/P



312/E-010



312/E-010/P



312/E-013



Suspension systems



X-ray shielding



Operating lamps



Imaging accessories



Protective clothing

Table mounted shields with a single friction pivot Model 312

Table mounted lower body shields with a single friction pivot

The pivotal arm can be swivelled away from the table to form a 49 cm wide 0.5 mm Pb protective wing. A self-adjusting friction pivot ensures that it remains in the desired position. Shields have 70 cm high full width flexible curtains that conform around C-arm equipment without gaping.

Shields with overlapping panels are a no cost option.

- Kenex shields can be used on both sides of the table and fit onto 25 mm high tableside accessory rails with a thickness range from 7.7 mm to 10 mm.
- 78 cm wide shields are supplied for attachment to 25 mm high tableside rails, but can also be configured on site to fit onto 29 mm high rails.

312 – Table shields 100 cm wide with a single friction pivot

- All 100 cm shields have a 35 cm long accessory rail to keep equipment controls close to hand and the curtain behind provides extra protection. The rail is available in two sizes.
- These shields can also overhang the tableside rail to be positioned nearer the head end.

Description	With 350 x 10 x 25 mm accessory rail	With 350 x 7.7 x 25 mm accessory rail
One piece table shield with a 57 cm wide lift-off top shield	312/E-016	312/E-016/8
Alternative model with overlapping curtain panels	312/E-016/P	312/E-016/8P
One piece table shield without a top shield	312/E-015	312/E-015/8
Alternative model with overlapping curtain panels	312/E-015/P	312/E-015/8P

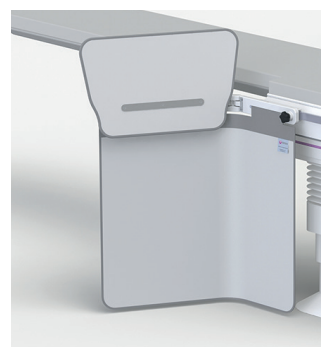


312/E-016

78 cm wide with a single friction pivot

- 78 cm shields fit onto 25 mm and 29 mm high tableside rails.

Description	Product code
One piece table shield with a 57 cm wide lift-off top shield	312/E-006
Alternative model with overlapping curtain panels	312/E-006/P
One piece table shield without a top shield	312/E-005
Alternative model with overlapping curtain panels	312/E-005/P



312/E-006

Both sides of the table

Kenex table shields can be moved from one side of the table to the other in an instant by simply rotating the upper part 180° horizontally. The pivotal arm always faces the head end.



312 – Table shields

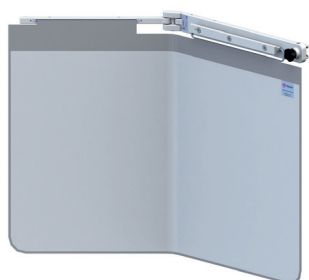
100 cm wide with a single friction pivot



312/E-016



312/E-016/P



312/E-015



312/E-015/P

78 cm wide with a single friction pivot



312/E-006



312/E-006/P



312/E-005



312/E-005/P

312 – Top shield options and replacements

- Top shields are flexible and stand 25 cm above the tableside rail (Reduced height top shields stand 15 cm above).
- 27 and 57 cm shield combinations give up to 92 cm wide upper protection.

Description	Product code
57 cm lift-off top replacement (1)	312/DS/3.32
57 cm fold-down top replacement (2)	312/DS/3.33
57 cm lift-off top replacement for collision resilient shield (3)	312/DS/3.32/3
27 cm lift-off top (4)	312/DS/3.30
27 cm lift-off top (Short version) (5)	312/DS/3.41
Reduced height, set of three (6)	312/E/024

Wider upper protection options

57 cm tops used together with 27 cm tops provide the following total upper protection:-

57 cm wide top / shield width	27 cm wide top shield	upper protection
57 cm top on 78 cm shield with:	1 off 312/DS/3.30	= 74 cm wide
57 cm top on 92 cm shield with:	2 off 312/DS/3.30	= 92 cm wide
57 cm top on 100 cm shield with:	1 off 312/DS/3.41	= 74 cm wide
57 cm top on 114 cm shield with:	1 each 312/DS/3.30 & 312/DS/3.41	= 92 cm wide



(1) (2) or (3)



(4)



(5)

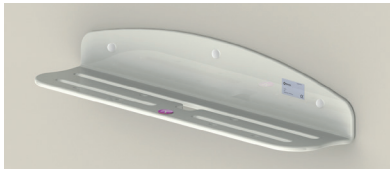


(6)

Wall racks for table mounted lower body shields

These racks provide a convenient storage location when shields are removed from the tableside.

Description	Product code
Wall rack for a lower body shield	312/W-LB
Wall rack for 1 x 57 cm wide top shield and 2 x 27 cm wide top shields (excluding fold down)	312/W-TOP



312/W-TOP



312/W-LB



312/W-TOP (above)
312/W-LB (below)

Mobile racks for table mounted lower body shields

Effective mobile storage combinations for lower body table shields (types 311 & 312), removable Kenex top shield sets (1 x 57 cm and 2 x 27 cm wide) and optional head end shields (types 313).

Description	Product code
Mobile rack for 1 x table shield, 1 x set of top shields and 1 x head end shield	1342/A2/E
Mobile rack for 2 x table shields and 2 x sets of top shields	1342/A2/F



1342/A2/E
Shields not included

Table mounted shield collision resilient Model 312

Collision resilient table mounted lower body shields

Unique patented mechanism enables the pivotal arm to move up when in collision with C-arm equipment.

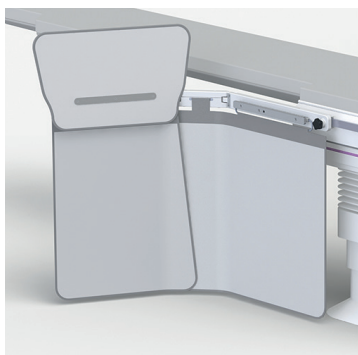
- Both models have a double-jointed pivotal arm supporting a 70 cm high 0.5 mm lead equivalent flexible protective curtain.
- The pivotal arm and curtain can move up when a C-arm is in contact from below.
- The curtain can move laterally close to the tableside or swivel away to form a protective wing.

312 – Collision resilient shield

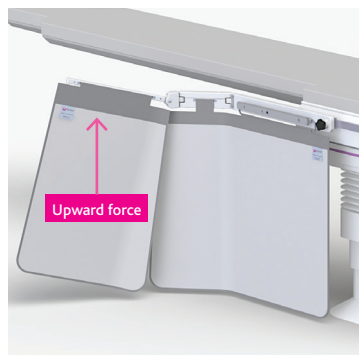
114 cm wide with a double friction joint

- Fitted with a 35 cm long rail for equipment controls.
- Fits onto 25 mm high tableside rails.
- Provides extra protection behind attached equipment controls.
- Can be fitted to either sides of the table, with the pivotal arm always positioned towards the head end.

Description	With 350 x 10 x 25 mm accessory rail	With 350 x 7.7 x 25 mm accessory rail
Collision resilient shield with 57 cm wide lift-off top	312/E-023	312/E-023/8



312/E-023

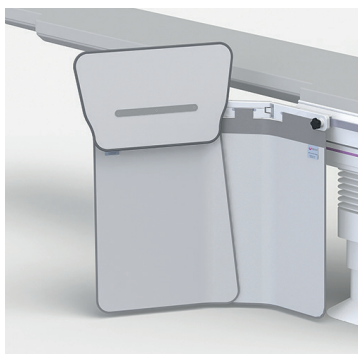


312/E-023 with top shield removed

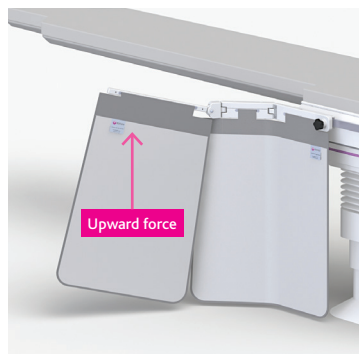
92 cm wide with a double friction joint

- Fits onto 25 mm high tableside rails or can be configured on site for 29 mm high rails.
- Can be fitted to either sides of the table, with the pivotal arm always positioned towards the head end.

Description	Product code
Collision resilient shield with 57 cm wide lift-off top	312/E-013



312/E-013



312/E-013 with top shield removed

> Table mounted shields head end Model 313

These lower body shields substantially reduce exposure to scatter radiation emanating from the table or patient's body. They comprise of a lightweight and durable structure supporting a flexible 0.5 mm lead equivalent curtain or multiple curtains.

- The shield slides onto a carbon fibre table top and maintains its position even when the table is tilted.
- The pivotal side wings can be formed around the user, individually extended forward along the table side, or folded neatly away according to preference. The pivotal arms can be quickly repositioned to allow full C-arm movement.
- Each shield is manufactured to suit a specific table and can be provided with an optional wall storage rack if not already included. This allows the shield arms to be folded inwards to reduce wall space to a minimum.

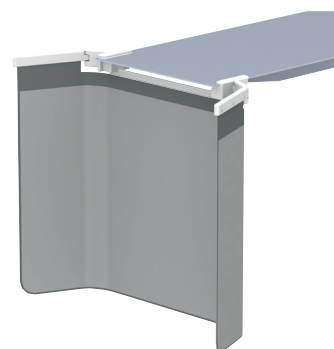
Please specify size and make of table when ordering.

A downloadable pdf measurement sheet is available on our website or by request.

313/A2

56 cm wide central section and two 32 cm wide pivotal side wings, supporting an 80 cm long flexible 0.5mm Pb equivalent curtain. Total width: 120 cm (dependent upon make of table)

Description	Product code
Head end table shield	313/A2
Optional wall rack	On request
Head end table shield & wall rack for use with a 525 mm wide Artis table or 520 mm wide TruSystem 7500 for Artis zee systems	313/A2-001
Head end table shield & wall rack for use with a 550 mm wide Artis zee multipurpose (MP) table	313/A2-008

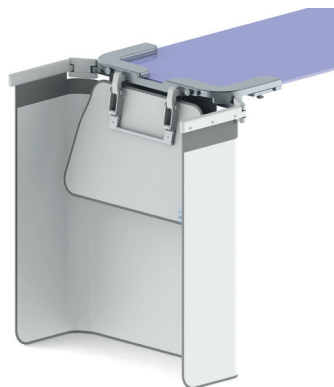


313/A2

313/A3

57 cm wide central section and two 31 cm wide pivotal side wings, supporting an 80 cm long flexible 0.5mm Pb equivalent curtain. The flexible 57 cm wide x 27 cm high top shield folds down when required.

Description	Product code
Head end table shield and flexible 57 cm wide x 27 cm high fold down top shield for use with a 500 mm wide Allura AD7 table	313/A3-001
Optional wall rack	313/A3- 001/W



313/A3-001
Top shield shown folded down

Table mounted shields upper foot end Model 311

311/TC – Upper foot end table shield

This shield protects against scatter radiation and also helps protect against possible blood splashes during some interventional procedures.

- Designed for use across the table towards the foot end.
- Fits onto both 25 mm high tableside accessory rails (7.7 - 10 mm thick).
- Lead acrylic window 60 cm high x 80 cm wide (dependent on table width), with lower flexible curtain.
- Overall height: 90 cm.
- Lead equivalent protection throughout: 0.5 mm.

Please specify size and make of the table.

A downloadable pdf measurement sheet is available on request.

Description	Product code
Table end upper shield	311/TC/004

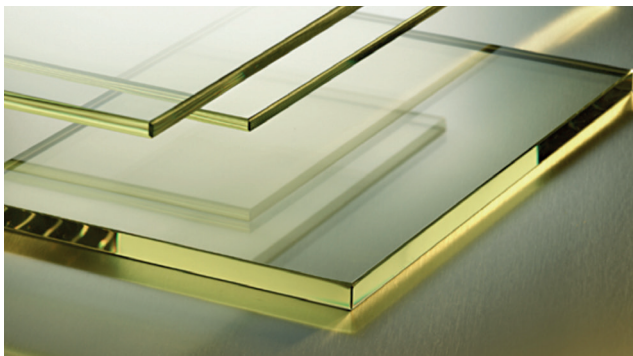


311/TC/004

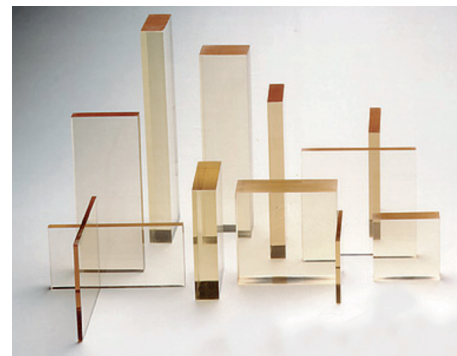
Radiation shielding materials Models 320/323/325

Description	Product code
Flexible lead vinyl sheeting	
0.5 mm Pb equivalent 95 cm wide. Price per linear metre	320/K/050/96
Lead glass – clear optical quality 2.2 mm Pb equivalent.	
30 x 40 cm	323/Z/3040
40 x 50 cm	323/Z/4050
Larger sizes up to 100 x 200 cm	
Clear lead acrylic (plastic).	
0.5 mm Pb equivalent (12 mm thick)	325/054

Other Pb values for the above materials are also available.



Lead glass



Lead acrylic



Operating lamps

Our modern ergonomic lamps create ideal examination and operating conditions

Such as daylight characteristics, cool light technology with almost non-existent heat dispersion, faceted multi-lenses for even illumination, high contrast colour rendering for recognition of colour tones and controls to alter the light field size and intensity. LED MC models enable the colour temperature values to be altered to create a range of settings according to preference or application. For example 4500 or 4750 Kelvin for cold-white or warm-white light.



LED 2SC & LED 2MC

> Operating and examination lamps

Lamps can be used in combination with radiation shields or separately, either as a static installation or as a movable unit in a ceiling track.

Outstanding illumination with high-contrast daylight characteristics, optimal colour reproduction and cool light technology are features of these examination and surgical lamps. Robust suspension arms, comprising a 95 cm extension with a 91 cm spring arm, provide extensive reaching capacity within a 372 cm diameter and a height adjustment of 118 cm. Mobile versions are available with stand by battery power.



LED 130F



LED 2SC & LED 2MC



LED 3SC & LED 3MC



LED 150F



LED 300 DF

Additional sterilisable handle

Description	Product code
Spare sterilisable handle. (available for all lights)	300/L/2115/0002

LED 130F – Focusable LED examination lamps

Light output 70,000 Lux

- Colour rendering index >Ra 95, colour temperature 4300K and focusable light field 14-25 cm diameter.
- Dimming range 50% to 100% with on/off switch at lamp head.
- 19 LED's (life span >50,000h) included in 33 cm diameter lamp head with sterilisable handle.
- Supplied with a separate power supply unit(110-250V 50-60Hz) and housing.

Description	Product code
LED 130F lamp and suspension arm only (for use with a Kenex ceiling radiation shield)	300/L-LED130F
LED 130F lamp, suspension arm and ceiling column	300/CL-LED130F
LED 130F lamp, suspension arm and wall fixing bracket	300/WL-LED130F



LED 130F

LED 150F – Focusable LED examination and small operating lamps

Light output 110,000 Lux

- Colour rendering index >Ra 95, colour temperature 4300K and focusable light field 18-25 cm diameter.
- Dimming range 50% to 100% with on/off switch at lamp head.
- 26 LED's (life span >50,000h) included in 38 cm diameter lamp head with sterilisable handle.
- Supplied with a separate power supply unit (110-250V 50-60Hz) and housing.

Description	Product code
LED 150F lamp and suspension arm only (for use with a Kenex ceiling radiation shield), incl. power supply	300/L-LED150F
LED 150F lamp, suspension arm and ceiling column, includes power supply	300/CL-LED150F
LED 150F lamp, suspension arm and wall fixing bracket, includes power supply	300/WL-LED150F

Lamp Upgrade

A 150F lamp head with LED technology, can replace an existing Kenex 130F lamp head, or older Triaflex lamp head, (with halogen bulbs), without the need to replace their existing suspension arms. LED 150F light output: 100,000 LUX.

Description	Product code
LED 150F lamp head with separate electronic transformer (110-250V 50-60Hz) and housing	150F/400/3.1



LED 150F

➤ Operating and examination lamps continued

Mobile Lamps with LED technology

LED 2SC mobile lamp

Light output 115,000 Lux

See below for lamp details.

Arm reach: 118 cm. Height range: 101 – 260 cm.

Description	Product code
Mobile lamp with power supply	190/230/1200
Mobile lamp with battery & charger for 3 hours use	190/230/1500

LED 3SC mobile lamp

Light output 140,000 Lux

See page 21 for lamp details.

Arm reach: 118 cm. Height range 101 – 260 cm.

Description	Product code
Mobile lamp with power supply	360/530/1200
Mobile lamp with battery & charger for 3 hours use	360/530/1500



LED 2SC & 3SC

LED 130F & LED 150F mobile lamp

Light output 70,000 & 100,000 Lux

See page 19 for lamp details.

Description	Product code
LED 130F mobile lamp with power supply Arm reach: 91 cm. Height range 91-214 cm	130/430/1300
LED 150F mobile lamp with power supply Arm reach: 80 cm. Height range 94-202 cm	150/430/1300



130/430/1300

LED 2SC – Single colour LED minor operating lamp

Light output 115,000 Lux

- Colour rendering index >Ra 95, colour temperature 4500K and focusable light field 17-28 cm diameter.
- Touch panel light intensity control (5 -100%) with on/off switch.
- Depth light and Endo light switching for increased intensity to central LED segments or where outer segments are turned off.
- 21 LED's (life span >50,000h) included in 49 cm diameter lamp head with sterilisable handle.
- Supplied with a separate power supply unit (110-250V 50-60Hz) and housing.

Description	Product code
LED 2SC lamp and suspension arm only (for use with a Kenex ceiling radiation shield)	190/230/01
LED 2SC lamp, suspension arm and ceiling column	190/230/03

Additional sterilisable handle available for all lights see page 19.



LED 2SC & LED 2MC

LED 2MC – Multi colour LED minor operating lamp

Light output 115,000 Lux

As LED 2SC but with 84 LED's and adjustable colour temperature range: 3750, 4000, 4250, 4500 and 4750 Kelvin.

Description	Product code
LED 2MC lamp and suspension arm only (for use with a Kenex ceiling radiation shield)	180/230/01
LED 2MC lamp, suspension arm and ceiling column	180/230/03



LED 2SC & LED 2MC

LED 3SC – Single colour surgical LED lamp

Light output 140,000 Lux

- Colour rendering index >Ra 95, colour temperature 4500K and focusable light field 17-28 cm diameter.
- Touch panel light intensity control (5 -100%) with on/off switch.
- Depth light and Endo light switching (for increased intensity to central LED segments or where outer segments are turned off).
- 28 LED's (life span >50,000h) included in 57 cm diameter lamp head with sterilisable handle.
- Supplied with a separate power supply unit (110-250V 50-60Hz) and housing.

Description	Product code
LED 3SC lamp and suspension arm only (for use with a Kenex ceiling radiation shield)	360/530/01
LED 3SC lamp, suspension arm and ceiling column	360/530/03



LED 3SC & LED 3MC

LED 3MC – Multi colour surgical LED lamp

Light output 140,000 Lux

As LED 3SC but with 112 LED's and adjustable colour temperature range: 3750, 4000, 4250, 4500 and 4750 Kelvin.

Description	Product code
LED 3MC lamp and suspension arm only (for use with a Kenex ceiling radiation shield)	370/530/01
LED 3MC lamp, suspension arm and ceiling column	370/530/03



LED 3SC & LED 3MC

LED 300 DF – Single colour surgical LED lamp

Light output 140,000 Lux

- Colour rendering index >Ra 95, colour temperature 4500K.
- Step less dimming (50-100%) with on/off switch at lamp head.
- "Duo-Focus" system for merging and focusing the light field from 14-28 cm diameter.
- 36 LED's (life span >50,000h) included in 63 cm diameter lamp head with sterilisable handle.
- Supplied with a separate power supply unit (110-250V 50-60Hz) and housing.

Description	Product code
LED 300 DF lamp and suspension arm only (for use with a Kenex ceiling radiation shield)	340/630/01
LED 300 DF lamp, suspension arm and ceiling column	340/630/03



LED 300 DF

Additional sterilisable handle available for all lights see page 19.



Imaging accessories

We have been serving the worldwide medical community for over 45 years and use our experience to help our customers by providing only high performance accessories.

Those featured are designed in collaboration with medical professionals to provide innovative solutions to diagnostic imaging needs. All have been manufactured and tested to ensure they properly assist in obtaining quick and accurate results with the minimum of concern to the patient.

1330

Mobile holders for DR panels and cassettes Model 1330/1305

1330 – Mobile DR detector and cassette holder

Stable and compact design holds portable DR Panels and CR or film cassettes from 24 x 30 cm to 35 x 43 cm. Also holds full leg/spine image receptors of any length.

- Unlimited orientation for universal positioning possibilities.
- Telescopic width adjustable from 24.5 cm to 53.5 cm with no protruding parts.
- Height adjustable from floor level to 129 cm.
- Counterbalance mechanism included for effortless raising or lowering.
- Overhangs table or trolley by up to 62 cm.
- Accepts cassettes and image receptors up to 30 mm thick.
- Large castors with roll and swivel locks ensure effortless movement.
- Castors are fitted with guards to prevent the pedestal running over cables.
- Heavy base and low centre of gravity gives added stability.

Description

Mobile detector holder: Counterbalance load 6.7 kg

Mobile detector holder: Counterbalance load 4.2 kg

Mobile detector holder: Counterbalance load 2.5 kg

Product code

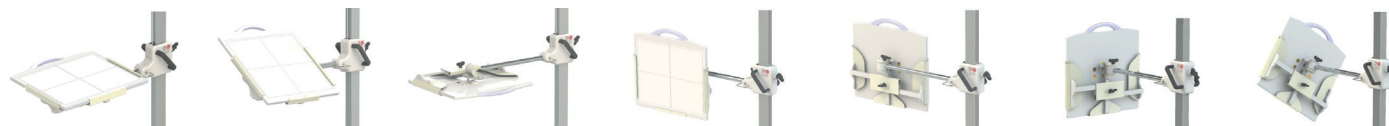
1330/3

1330/4

1330/5



1330



1305/8/1 – Mobile DR detector and cassette holder

Suitable for portable DR Panels and CR or film cassettes.

- Unlimited orientation for universal positioning possibilities.
- Telescopic width adjustable from 24.5 cm to 53.5 cm.
- Holds full leg/spine image receptors of any length.
- Not counterbalanced, but with easy height adjustment from floor level to 142 cm.
- Overhangs table or trolley by up to 49 cm.
- Accepts image receptor/cassette up to 30 mm thick of any length.
- Heavy base and low centre of gravity gives added stability.

Description

Mobile detector holder:

Product code

1305/8/1



1305/8/1

1305/3/1 – Mobile cassette holder

Cassettes or cassette-sized image receptors can be positioned at any angle.

- A versatile holder with universal applications.
- Telescopic width adjustable from 24.5 cm to 53.5 cm.
- Not counterbalanced, but with easy height adjustment from floor level to 120 cm.
- Ideal for routine lateral 'shoot-through' radiographs.
- Forward reach from column to cassette front: 36 cm.
- Accepts cassettes size image receptors up to 30 mm thick.

Description

Mobile cassette holder

Product code

1305/3/1



1305/3/1

Positioning aids Models 1700/1701

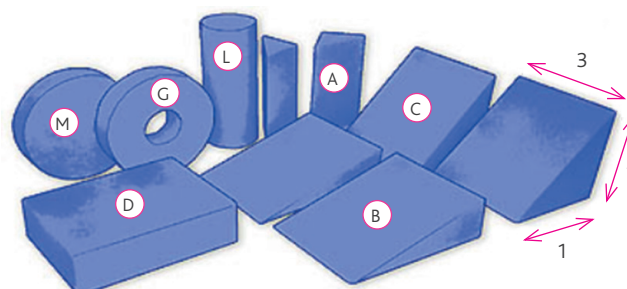
1700/PC – Plastic coated foam pads

These positioning aids are made from high quality polyester foam with a water-resistant polyurethane coating.

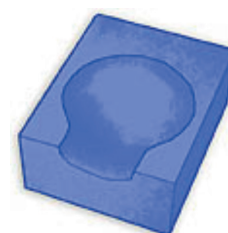
- Helps setting up the patient for examination or therapy.
- The skin-friendly covering prevents contaminants from penetrating the surface of the foam, which is easily wiped clean.

Note: Edge shadows may be seen on some radiographs particularly at low kV values.

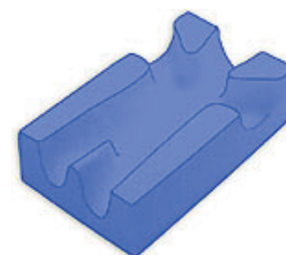
Note: Minimum order value £350.00 for foam pads. Surcharge below minimum order value: £45.00.



Description	Key	Width 1	Height 2	Length 3	Product code
Wedge small 45	A	8.5 cm	8.5 cm	20 cm	1700/PC-A
Wedge 15	B	25 cm	7 cm	20 cm	1700/PC-B
Wedge large 45	C	18 cm	18 cm	20 cm	1700/PC-C
Block	D	25 cm	7 cm	20 cm	1700/PC-D
Round pad	M	20 cm diameter x 5 cm thick			1700/PC-M
Ring	G	25 cm diameter x 5 cm thick			1700/PC-G
Cylinder	L	35 cm diameter x 25 cm long			1700/PC-L
Supine head mould		20 cm	10 cm	25 cm	1700/PC-F
Small baby mould		25 cm	12 cm	40 cm	1700/PCN1
Large baby mould		35 cm	12 cm	53 cm	1700/PCN2
Set of 7 Foam Shapes: 2 each of A, B & C plus 1 of D					1700/SET/PC/7



1700/PC-F



1700/PCN1

> Positioning aids continued

1701 – Sandbags

Supplied with or without a handle. Inner bag limp filed with silica sand. Outer bag nylon coated.

Size	Weight (approximate)	Product code
8 x 24 cm	0.7 kg	1701/02
10 x 30 cm	1.0 kg	1701/28
16 x 30 cm	1.7 kg	1701/06
16 x 40 cm	2.3 kg	1701/07
16 x 50 cm	2.8 kg	1701/08
16 x 60 cm	3.4 kg	1701/09
20 x 20 cm	1.4 kg	1701/18
20 x 30 cm	2.1 kg	1701/29
24 x 24 cm	2.0 kg	1701/10
30 x 30 cm	3.2 kg	1701/15
Reinforced handle fitted to any of the above sandbags		add/H to product code



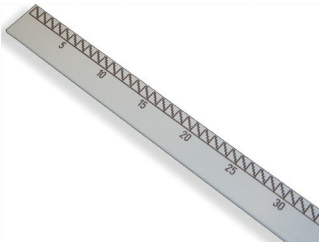
1701

Available in Royal, Navy, Poppy, Silver grey or Bottle green. See page 26.

> Film markers
Models 1206

1206 – Radiopaque rules

Description	Product code
100 cm Rule with 2 mm graduations	1206/1
50 cm Rule with 2 mm graduations	1206/4
30 cm Rule with 5 mm graduations	1206/2



1206

Patients chair

Model 1501

1501/D – Patients imaging chair

This chair is ideal for a range of imaging procedures.

- Hydraulic operation alters the seat height between 55 and 70 cm.
- Height adjustment can be made with ease, regardless of the weight of a seated patient.
- A single lever can raise, lower or lock the rotation of the large and comfortable seat.
- The back and arm rests are held securely yet can be removed and replaced in seconds.
- Castors have rolling and swivel action brakes, so any locked pair will prevent movement.



1501/D with back
& arms removed



1501/D

Description	Product code
Patients' imaging chair	1501/D

Mobile Pedestal

Models 1340/3 / 1340/3/LR

1340/3 – Mobile pedestal for tableside controls

This ergonomic mobile pedestal is designed to hold tableside equipment controls.

- 80 cm wide rails arranged in two tiers can accommodate several control modules.
- Both tiers are individually adjustable for height to suit controls and operator.
- The lower rail protrudes forward from the upper rail by 16 cm for a step wise setup.
- A heavy base with a 61 x 72 cm footprint provides a low centre of gravity and guarantees stability.
- Large twin wheel castors with roll and swivel locks ensure effortless movement.
- Castors are fitted with guards to prevent the pedestal running over cables.
- Overall height 124 cm



1340/3

Description	Product code
Mobile pedestal with 80 cm wide rails (7.7 x 25 mm section)	1340/3
Mobile pedestal with 80 cm wide rails (10 x 25 mm section)	1340/3/10

1340/3/LR – Mobile pedestal with attached radiation shield

Mobile pedestal as model 1340/3 but with an attached 80 cm wide 0.5 mm lead equivalent flexible protective curtain.

Description	Product code
Mobile pedestal 80 cm rails (7.7 x 25 mm section) and shield	1340/3/LR
Mobile pedestal 80 cm rails (10 x 25 mm section) and shield	1340/3/10/LR



1340/3/LR



Suspension systems



X-ray shielding



Operating lamps



Imaging accessories



Protective clothing



Quality and comfort

Current diagnostic and therapeutic procedures are often lengthy with x-ray protective clothing worn for extended periods.

It is therefore more important than ever that it correctly fits both the wearer and the application. Our extended range of LytaType x-ray protective clothing achieves these essential occupational health requirements by ensuring it is well tailored, flexible and comfortable to wear.

Kenex are certified to Regulation (EU) 2016/425 (PPE) for the design and manufacture of x-ray protective clothing. LytaType aprons and thyroid collars comply with the requirements of BS EN 61331-3:2014 and BS EN 13402-3:2013. They include lead (Pb) vinyl material tested for use with a 50 to 150 kV range of x-ray tube voltages, as specified in BS EN 61331-1:2014.



907 Pocket 900/001 shown is an optional extra

X-ray protective clothing Order guide

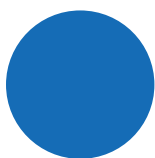
Please follow these instructions when ordering

To order please specify: 1. Model description, 2. Model number, 3. Lead equivalent, 4. Size, 5. Length taken from the middle shoulder, 6. Colour see below, 7. Any optional item.

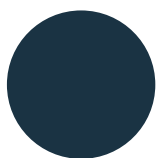
All of our *LytaType* personal x-ray protective clothing can be tailor made to your personal requirements

A downloadable order guide and tailor made measurements sheet is available on request.

LytaType colours and codes



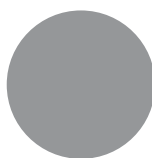
Royal
02



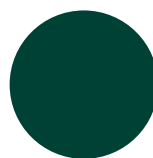
Navy
04



Poppy
11



Silver grey
40



Bottle green
41

Please note the colours shown are approximate. A colour swatch is available on request.

907 – LytaType double sided apron

Very popular design with a shoulder clip and fastenings on both sides. Fitted with padded shoulders for extra comfort.

(S) Small for chest sizes (A) 80 – 90 cm girth

Lead equivalent (Pb)* Front and back	Length (B)	Apron width shoulder / hip	Maximum girth of waist (C) or hip (D)	Product code
0.25 / 0.25 mm	85 cm	40 cm / 60 cm	100 cm	907/22/085/S
"	90 cm	"	"	907/22/090/S
"	100 cm	"	"	907/22/100/S
"	110 cm	"	"	907/22/110/S
0.35 / 0.35 mm	85 cm	40 cm / 60 cm	100 cm	907/33/085/S
"	90 cm	"	"	907/33/090/S
"	100 cm	"	"	907/33/100/S
"	110 cm	"	"	907/33/110/S
0.50 / 0.50 mm	85 cm	40 cm / 60 cm	100 cm	907/55/085/S
"	90 cm	"	"	907/55/090/S
"	100 cm	"	"	907/55/100/S
"	110 cm	"	"	907/55/110/S

(M) Medium for chest sizes (A) 90 – 100 cm girth

0.25 / 0.25 mm	90 cm	48 cm / 60 cm	100 cm	907/22/090/M
"	100 cm	"	"	907/22/100/M
"	110 cm	"	"	907/22/110/M
0.35 / 0.35 mm	90 cm	48 cm / 60 cm	100 cm	907/33/090/M
"	100 cm	"	"	907/33/100/M
"	110 cm	"	"	907/33/110/M
0.50 / 0.50 mm	90 cm	48 cm / 60 cm	100 cm	907/55/090/M
"	100 cm	"	"	907/55/100/M
"	110 cm	"	"	907/55/110/M

(L) Large for chest sizes (A) 100 - 120 cm girth

0.25 / 0.25 mm	90 cm	48 cm / 75 cm	120 cm	907/22/090/L
"	100 cm	"	"	907/22/100/L
"	110 cm	"	"	907/22/110/L
0.35 / 0.35 mm	90 cm	48 cm / 75 cm	120 cm	907/33/090/L
"	100 cm	"	"	907/33/100/L
"	110 cm	"	"	907/33/110/L
0.50 / 0.50 mm	90 cm	48 cm / 75 cm	120 cm	907/55/090/L
"	100 cm	"	"	907/55/100/L
"	110 cm	"	"	907/55/110/L

Also available: -

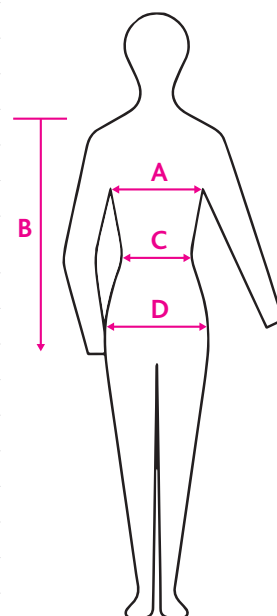
Lead equivalent Front and back	Product code
Front 0.35 mm, back 0.25 mm @ 0.35 / 0.35 mm prices less 4%	907/32/add length/add size
Front 0.50 mm, back 0.25 mm @ 0.50 / 0.50 mm prices less 15%	907/52/add length/add size
Front 0.50 mm, back 0.35 mm @ 0.50 / 0.50 mm prices less 12%	907/53/add length/add size
Please add length and S, M, or L (small, medium or large) to the applicable product code.	
Example: 0.35 front (3), 0.25 back (2), 90 cm long and medium size:	907/32/090/M

A downloadable order guide and tailor made measurements sheet is available on request. For colours please see page 26.

*Pb: Lead vinyl in accordance with BS EN 61331-1:2014 in the 50 to 150 kV range of x-ray tube voltages.



907
Pocket 900/001 shown
is an optional extra.



> X-ray protective clothing continued

907 – Optional extras

Description	Product code
Pocket	900/001
Embroidery in a position to be specified	9/B20
Lumbar support belt elasticated type transfers weight to the hips	9/B15
Front fastening belt with VELCRO® closure	9/B16
Back fastening belt with VELCRO® closure	9/B17
Twin shoulder clips allow apron to 'fall-away' after use	9/B18
Right side closed fastenings on the shoulder and left side	9/B19



9/B15

A downloadable order guide and tailor made measurements sheet is available on request. For colours please see page 26.

905 – LytaType wrap-around coat

Front opening all-round coat with front VELCRO® fastening, fitted with padded shoulders for extra comfort. Wide front doubles the stated protection at the overlap.

(S) Small for chest sizes (A) 80 – 90 cm girth
Protection is double where the front of the apron overlaps

Lead equivalent (Pb)* Front and back	Length (B)	Maximum girth of waist (C) or hip (D)	Product code
0.25 / 0.25 mm	85 cm	100 cm	905/22/085/S
"	90 cm	"	905/22/090/S
"	100 cm	"	905/22/100/S
"	110 cm	"	905/22/110/S
0.25 / 0.35 mm	85 cm	100 cm	905/23/085/S
"	90 cm	"	905/23/090/S
"	100 cm	"	905/23/100/S
"	110 cm	"	905/23/110/S
0.35 / 0.35 mm	85 cm	100 cm	905/33/085/S
"	90 cm	"	905/33/090/S
"	100 cm	"	905/33/100/S
"	110 cm	"	905/33/110/S

(M) Medium for chest sizes (A) 90 – 100 cm girth
Protection is double where the front of the apron overlaps

0.25 / 0.25 mm	90 cm	100 cm	905/22/090/M
"	100 cm	"	905/22/100/M
"	110 cm	"	905/22/110/M
0.25 / 0.35 mm	90 cm	100 cm	905/23/090/M
"	100 cm	"	905/23/100/M
"	110 cm	"	905/23/110/M
0.35 / 0.35 mm	90 cm	100 cm	905/33/090/M
"	100 cm	"	905/33/100/M
"	110 cm	"	905/33/110/M



905 with a wide front overlap

Optional extras shown: -
Pocket 900/001
9/B15 support belt,
951/05 thyroid collar see page 34.

*Pb: Lead vinyl in accordance with BS EN 61331-1:2014 in the 50 to 150 kV range of x-ray tube voltages.

L Large for chest sizes (A) 100 – 120 cm girth
Protection is double where the front of the apron overlaps

Lead equivalent (Pb)* Front and back	Length (B)	Maximum girth of waist (C) or hip (D)	Product code
0.25 / 0.25 mm	90 cm	120 cm	905/22/090/L
"	100 cm	"	905/22/100/L
"	110 cm	"	905/22/110/L
0.25 / 0.35 mm	90 cm	120 cm	905/23/090/L
"	100 cm	"	905/23/100/L
"	110 cm	"	905/23/110/L
0.35 / 0.35 mm	90 cm	120 cm	905/33/090/L
"	100 cm	"	905/33/100/L
"	110 cm	"	905/33/110/L

Also available: -

Lead equivalent front and back	Product code
Front 0.25 mm, back 0.50 mm @ 0.25 / 0.25 mm prices plus 20%	905/25/add length/add size
Front 0.35 mm, back 0.50 mm @ 0.25 / 0.25 mm prices plus 25%	905/35/add length/add size
Front 0.50 mm, back 0.50 mm @ 0.25 / 0.25 mm prices plus 30%	905/55/add length/add size
Please add length and S, M, or L (small, medium or large) to the applicable product code.	
Example: 0.25 front (2), 0.50 back (5), 90 cm long and medium size:	905/25/090/M

905 – Optional extras

Description	Product code
Pocket	900/001
Embroidery in a position to be specified	9/B20
Lumbar support belt elasticated type transfers weight to the hips	9/B15
Thyroid collar	951/05

A downloadable order guide and tailor made measurements sheet is available on request. For colours please see page 26.

903 – LytaType wrap - around coat

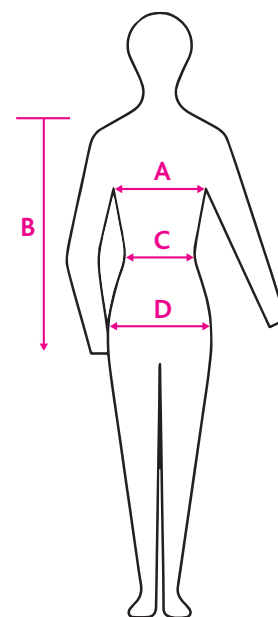
Front opening all-round coat with front VELCRO® fastening, fitted with padded shoulders for extra comfort. Narrow front doubles the stated protection at an overlap of approximately 15 cm. Prices: Same as for model 905.

903 – Optional extras

Description	Product code
Pocket	900/001
Embroidery in a position to be specified	9/B20
Thyroid collar	951/05

A downloadable order guide and tailor made measurements sheet is available on request. For colours please see page 26.

*Pb: Lead vinyl in accordance with BS EN 61331-1:2014 in the 50 to 150 kV range of x-ray tube voltages.



Model 903



Suspension systems



X-ray shielding



Operating lamps



Imaging accessories



Protective clothing

> X-ray protective clothing continued

910 – LytaType half back apron

Provides front protection plus a degree at the back and to either side.
Fastened at the back with elasticated straps plus cross-over ties with a front buckle.

S Small for chest sizes (A) 80 – 90 cm girth

Lead equivalent (Pb)* Front and back	Length (B)	Apron width shoulder / hip	Maximum girth of waist (C) or hip (D)	Product code
0.25 / 0.25 mm	85 cm	40 cm / 60 cm	100 cm	910/22/085/S
"	90 cm	"	"	910/22/090/S
"	100 cm	"	"	910/22/100/S
"	110 cm	"	"	910/22/110/S
0.35 / 0.25 mm	85 cm	40 cm / 60 cm	100 cm	910/32/085/S
"	90 cm	"	"	910/32/090/S
"	100 cm	"	"	910/32/100/S
"	110 cm	"	"	910/32/110/S
0.50 / 0.25 mm	85 cm	40 cm / 60 cm	100 cm	910/52/085/S
"	90 cm	"	"	910/52/090/S
"	100 cm	"	"	910/52/100/S
"	110 cm	"	"	910/52/110/S

M Medium for chest sizes (A) 90 – 100 cm girth

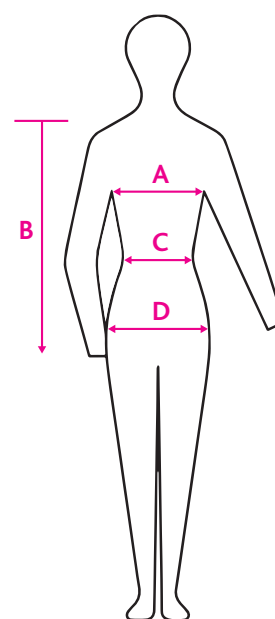
0.25 / 0.25 mm	90 cm	48 cm / 60 cm	100 cm	910/22/090/M
"	100 cm	"	"	910/22/100/M
"	110 cm	"	"	910/22/110/M
0.35 / 0.25 mm	90 cm	48 cm / 60 cm	100 cm	910/32/090/M
"	100 cm	"	"	910/32/100/M
"	110 cm	"	"	910/32/110/M
0.50 / 0.25 mm	90 cm	48 cm / 60 cm	100 cm	910/52/090/M
"	100 cm	"	"	910/52/100/M
"	110 cm	"	"	910/52/110/M

L Large for chest sizes (A) 100 – 120 cm girth

0.25 / 0.25 mm	90 cm	48 cm / 75 cm	120 cm	910/22/090/L
"	100 cm	"	"	910/22/100/L
"	110 cm	"	"	910/22/110/L
"	120 cm	"	"	910/22/120/L
0.35 / 0.25 mm	90 cm	48 cm / 75 cm	120 cm	910/32/090/L
"	100 cm	"	"	910/32/100/L
"	110 cm	"	"	910/32/110/L
"	120 cm	"	"	910/32/120/L
0.50 / 0.25 mm	90 cm	48 cm / 75 cm	120 cm	910/52/090/L
"	100 cm	"	"	910/52/100/L
"	110 cm	"	"	910/52/110/L
"	120 cm	"	"	910/52/120/L



910



910 – Optional extras

Description	Product code
Pocket	900/001
Embroidery in a position to be specified	9/B20
Lumbar support belt elasticated type transfers weight to the hips	9/B15

A downloadable order guide and tailor made measurements sheet is available on request. For colours please see page 26.

*Pb: Lead vinyl in accordance with BS EN 61331-1:2014 in the 50 to 150 kV range of x-ray tube voltages.

909 – LytaType cross back apron

Excellent design transfers weight from the shoulders to the hips.
Elasticated flaps fasten at the sides.

(S) Small for chest sizes (A) 80 – 90 cm girth

Lead equivalent (Pb)* Front and back	Length (B)	Apron width shoulder / hip	Maximum girth of waist (C) or hip (D)	Product code
0.25 / 0.25 mm	85 cm	40 cm / 60 cm	100 cm	909/22/085/S
"	90 cm	"	"	909/22/090/S
"	100 cm	"	"	909/22/100/S
"	110 cm	"	"	909/22/110/S
0.35 / 0.25 mm	85 cm	40 cm / 60 cm	100 cm	909/32/085/S
"	90 cm	"	"	909/32/090/S
"	100 cm	"	"	909/32/100/S
"	110 cm	"	"	909/32/110/S
0.50 / 0.25 mm	85 cm	40 cm / 60 cm	100 cm	909/52/085/S
"	90 cm	"	"	909/52/090/S
"	100 cm	"	"	909/52/100/S
"	110 cm	"	"	909/52/110/S

(M) Medium for chest sizes (A) 90 – 100 cm girth

0.25 / 0.25 mm	90 cm	48 cm / 60 cm	100 cm	909/22/090/M
"	100 cm	"	"	909/22/100/M
"	110 cm	"	"	909/22/110/M
0.35 / 0.25 mm	90 cm	48 cm / 60 cm	100 cm	909/32/090/M
"	100 cm	"	"	909/32/100/M
"	110 cm	"	"	909/32/110/M
0.50 / 0.25 mm	90 cm	48 cm / 60 cm	100 cm	909/52/090/M
"	100 cm	"	"	909/52/100/M
"	110 cm	"	"	909/52/110/M

(L) Large for chest sizes (A) 100 - 120 cm girth

0.25 / 0.25 mm	90 cm	48 cm / 75 cm	120 cm	909/22/090/L
"	100 cm	"	"	909/22/100/L
"	110 cm	"	"	909/22/110/L
0.35 / 0.25 mm	90 cm	48 cm / 75 cm	120 cm	909/32/090/L
"	100 cm	"	"	909/32/100/L
"	110 cm	"	"	909/32/110/L
0.50 / 0.25 mm	90 cm	48 cm / 75 cm	120 cm	909/52/090/L
"	100 cm	"	"	909/52/100/L
"	110 cm	"	"	909/52/110/L

911 – LytaType cross back apron

Excellent design transfers weight from the shoulders to the hips.
Similar to model 909 but an elasticated front fastening belt.
Prices: Same as for model 909.
Measurements: Same as model 909.

909/911 – Optional extras

Description	Product code
Pocket	900/001
Embroidery in a position to be specified	9/B20

A downloadable order guide and tailor made measurements sheet is available on request. For colours please see page 26.

*Pb: Lead vinyl in accordance with BS EN 61331-1:2014 in the 50 to 150 kV range of x-ray tube voltages.



909



➤ X-ray protective clothing continued

915 – LytaType jacket (vest)

VELCRO® fastened overlapping front provides all round protection.
Front doubles the stated protection at an overlap of approximately 15 cm.

(S) Small for chest sizes (A) 80 – 90 cm girth

Lead equivalent (Pb)* Front and back	Length (B)	Maximum girth	Product code
0.25 / 0.25 mm	52 cm	100 cm	915/22/S
0.25 / 0.35 mm	52 cm	"	915/23/S
0.35 / 0.35 mm	52 cm	"	915/33/S

(M) Medium for chest sizes (A) 90 – 100 cm girth

0.25 / 0.25 mm	58 cm	100 cm	915/22/M
0.25 / 0.35 mm	58 cm	"	915/23/M
0.35 / 0.35 mm	58 cm	"	915/33/M

(L) Large for chest sizes (A) 100 – 120 cm girth

0.25 / 0.25 mm	65 cm	120 cm	915/22/L
0.25 / 0.35 mm	65 cm	"	915/23/L
0.35 / 0.35 mm	65 cm	"	915/33/L

A downloadable order guide and tailor made measurements sheet is available on request. For colours please see page 26.



915 & 919
Pockets 900/001 shown
are optional extras



915

919 – LytaType kilt (skirt)

Front doubles the stated protection at the overlap.
Front overlap of up to 15 cm provides extra central protection. Fitted with VELCRO® and belt fastening.

(S) Small for waist sizes (C) 70 – 84 cm girth

Lead equivalent (Pb)* Front and back	Length	Product code
0.25 / 0.25 mm	55 cm	919/22/S
0.25 / 0.35 mm	55 cm	919/23/S
0.35 / 0.35 mm	55 cm	919/33/S

(M) Medium for waist sizes (C) 78 – 99 cm girth

0.25 / 0.25 mm	60 cm	919/22/M
0.25 / 0.35 mm	60 cm	919/23/M
0.35 / 0.35 mm	60 cm	919/33/M

(L) Large for waist sizes (C) 90 – 115 cm girth

0.25 / 0.25 mm	65 cm	919/22/L
0.25 / 0.35 mm	65 cm	919/23/L
0.35 / 0.35 mm	65 cm	919/33/L

A downloadable order guide and tailor made measurements sheet is available on request. For colours please see page 26.



919
Pockets 900/001 shown
are optional extras

*Pb: Lead vinyl in accordance with BS EN 61331-1:2014 in the 50 to 150 kV range of x-ray tube voltages.

917 – LytaType double-sided short top apron

An alternative to model 915 for use with Kilt model 919.
Fitted with a shoulder clip and fastenings on both sides.

(S) Small for chest sizes (A) 80 – 90 cm girth

Lead equivalent (Pb)* Front and back	Length (B)	Apron width shoulder / hip	Maximum girth	Product code
0.25 / 0.25 mm	52 cm	40 cm / 60 cm	100 cm	917/22/S
0.35 / 0.25 mm	52 cm	"	"	917/32/S
0.35 / 0.35 mm	52 cm	"	"	917/33/S

(M) Medium for chest sizes (A) 90 – 100 cm girth

0.25 / 0.25 mm	58 cm	48 cm / 60 cm	100 cm	917/22/M
0.35 / 0.25 mm	58 cm	"	"	917/32/M
0.35 / 0.35 mm	58 cm	"	"	917/33/M

(L) Large for chest sizes (A) 100 – 120 cm girth

0.25 / 0.25 mm	70 cm	48 cm / 75 cm	120 cm	917/22/L
0.35 / 0.25 mm	70 cm	"	"	917/32/L
0.35 / 0.35 mm	70 cm	"	"	917/33/L



917

915/919/917 – Optional extras

Description	Product code
Pocket	900/001
Embroidery in a position to be specified	9/B20

A downloadable order guide and tailor made measurements sheet is available on request. For colours please see page 26.

921 – LytaType demi apron

Lower body aprons fitted with a soft vinyl covered spring waistband.

Lead equivalent (Pb)*	Size	Length	Width	Product code
0.5 mm	Toddler	25 cm	25 cm	921/05/01
	Child	30 cm	30 cm	921/05/02
	Adult	37 cm	40 cm	921/05/03
	Large adult	45 cm	50 cm	921/05/04

921-V – LytaType demi apron

Lower body aprons fitted with a VELCRO® fastening belt.

Lead equivalent (Pb)*	Size	Length	Width	Product code
0.5 mm	Toddler	25 cm	25 cm	921-V/05/01
	Child	30 cm	30 cm	921-V/05/02
	Adult	37 cm	40 cm	921-V/05/03
	Large adult	45 cm	50 cm	921-V/05/04

For colours please see page 26.



921

*Pb: Lead vinyl in accordance with BS EN 61331-1:2014 in the 50 to 150 kV range of x-ray tube voltages.

> X-ray protective clothing continued

951/05 – Thyroid collar

Collar and bib type for the best fit and comfort.

- Soft flexible and adjustable for any neck size.
- Provides optimum protection to the thyroid area.
- Lead equivalent 0.5 mm VELCRO® closure.

Description	Product code
Thyroid collar	951/05

For colours please see page 26.



951/05

953/05 – Thyroid collar

One-piece design without edge binding.

- Very soft and flexible.
- Lead equivalent 0.5 mm.
- VELCRO® closure for any neck size.

Description	Product code
Thyroid collar	953/05

For colours please see page 26.



953/05

278 – Ovary shields

Provides maximum protection without interfering with diagnostically important areas of image. 1.0 mm Pb equivalent shields adjust in a fan-wise fashion to fit the pelvis.

Description	Product code
Ovary shields set of 3 sizes	278/SET



278

299 – T shape gonad shields

2.0 mm lead centre section encased in tough plastic.

Description	Product code
T shape shields set of 3 sizes	299/SET



299

265 – Radiation protective glasses

Optically correct 0.75 mm Pb lead glass lenses with 0.50 mm lead foil side protection.

Description

Radiation protective glasses

Product code

265/SW/S



265/SW/S

Apron storage racks Model 100

100 – Multifunction apron wall console

A swivel hanger rack that prolongs the life of protective clothing.

- Occupies minimal wall space.
- Clothing is clearly arranged.
- Shaped hangers extend the service life of protective clothing.
- Hangers fan out from the wall for immediate access, or fold flat when fully loaded.
- Left and right racks together provide storage for up to 10 aprons.



100/5L & 100/5R

Description

1 swivel arm (180° movement)

Product code

100/1

2 arms swivel to the right

100/2R

2 arms swivel to the left

100/2L

3 arms swivel to the right

100/3R

3 arms swivel to the left

100/3L

4 arms swivel to the right

100/4R

4 arms swivel to the left

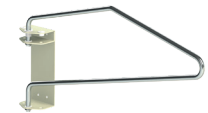
100/4L

5 arms swivel to the right

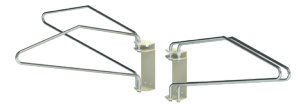
100/5R

5 arms swivel to the left

100/5L

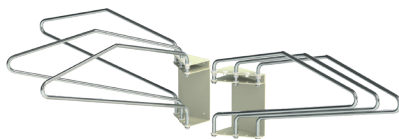


100/1



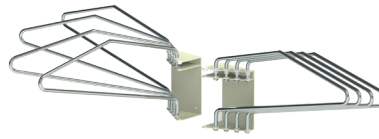
100/2L

100/2R



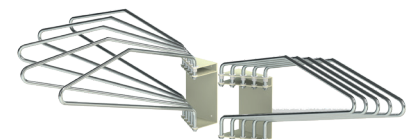
100/3L

100/3R



100/4L

100/4R



100/5L

100/5R



Suspension systems



X-ray shielding



Operating lamps



Imaging accessories



Protective clothing

➤ Apron storage racks continued

102/C – Mobile swivel arm apron rack*

Ideal for departments where wall racks cannot be installed.

- Hangers fan so aprons can be selected, removed and replaced with ease.
- Racks are compact and can be parked at any convenient location and moved as required.
- The hanger profile provides correct storage for protective clothing.

Dimensions: 61 cm wide x 64 cm deep x 155 cm high.

Description	Product code
Rack for up to 6 garments	102/C/06
Rack for up to 11 garments	102/C/11



102/C/11

100 – Kilt / skirt hooks

A pair of hooks can be simply added to a swivel hanger at any time.

- Kilts with internal fitted loops can be suspended from the hooks.
- Use with models 100 and 102.

Description	Product code
Hooks, per pair	100/428



100/428

103 – Mobile apron rail*

Accommodates aprons on optional coat hangers.

Dimensions: 57 cm wide x 61 cm deep x 140 cm high.

Description	Product code
Mobile apron rail	103
Coat hanger	106



103

* Note: Care should be taken when moving a mobile rack when fully laden with protective garments, as they could swing from side-to-side and cause the rack to overbalance.

Terms and conditions

Acceptance of orders

Orders are accepted subject to the following business terms and conditions: -

Price list

All prices listed are in GB Pounds Sterling, are provisional only and are subject to alteration without notice. Unless otherwise stated, prices are for goods Free Carrier Harlow (FCA) in accordance with the International Chamber of Commerce (ICC) trade terms: Incoterms 2010. Prices are exclusive of VAT. VAT if applicable will be charged at the current rate.

Terms of payment

Credit accounts are strictly net payable within 30 days of invoice date.

Carriage

As a general rule carriage will be charged at cost, with shipments made at the purchaser's risk. If transport insurance is requested and undertaken it will be charged to the purchaser as an additional cost. Unless we are given specific instructions we select the manner and route of shipment.

Damage or loss in transit

Any claim made concerning damage or shortages must be made in writing to us within 3 days of delivery of the goods. Any claim for non-delivery must be made in writing to us within 14 days from the date of our invoice. Original packaging must be retained.

Retention of title

Notwithstanding that delivery of the goods has been made, they remain the property of Kenex until payment is made in full.

Time of delivery

Every effort will be made to adhere to quoted delivery times. However, no liability can be accepted for any losses incurred by the purchaser for a failure to deliver within the stated period. Delays shall not entitle the purchaser to cancel the order nor to claim damages. We reserve the right to make partial deliveries.

Guarantee

We will make good at our discretion by repair or by the supply of a replacement, defects that appear in the goods of our manufacture and arise solely from faulty workmanship or materials, provided that the goods are returned to us carriage paid within one year from the date of delivery. Goods subject to fair wear & tear, misuse or inadequate maintenance are excluded. Any claim under this guarantee shall be limited to the cost of the goods.

Limitation of liability

Other than the statements made in Kenex literature, no warranty is expressed or implied as to the suitability of any product for any purpose. Purchasers must satisfy themselves on this point. Persons authorised to select or use Kenex X-ray protective garments, shields or other products must be aware of the dangers of exposure to radiation.

Specifications & descriptions

Technical data, dimensions, weights and illustrations are typical and not binding. Kenex reserve the right to improve or amend any product without notice.

Patents, trademarks, copyright and designs

Kenex is a registered trademark of Kenex (Electro-Medical) Limited. Kenex products are covered by patents and/or registered designs. Copyright: All rights reserved. No part of this publication may be reproduced without prior written permission.



Quality management systems and certification

Kenex is compliant and certified according to the following regulations and standards regarding design and manufacture of medical devices: -

2017/745 Medical device regulation (MDR)
2016/425 Personal protective equipment (PPE)
EN ISO 9001:2015 (Quality management systems requirements)
EN ISO 13485:2016 (Quality management systems for medical devices)
EN 61331-1:2014 (Determination of x-ray attenuation properties)
EN 61331-2:2014 (Translucent protective plates)
EN 61331-3:2014 (X-ray protective clothing)
EN 60601-1 (Medical electrical equipment – basic safety and essential performance)
EN 60068-2-1 & 2-2 (Environmental product testing: cold, dry heat & damp heat)

Where appropriate Kenex products are CE certified and most are UL classified.



Kenex (Electro-Medical) limited was established in 1970



Kenex (Electro-Medical) Limited
Unit 17, RO24 Greenway
Harlow Business Park
Harlow, Essex
CM19 5QB
England

T: +44 (0)1279 417241
F: +44 (0)1279 443749
E: kenex@kenex.co.uk
www.kenex.co.uk