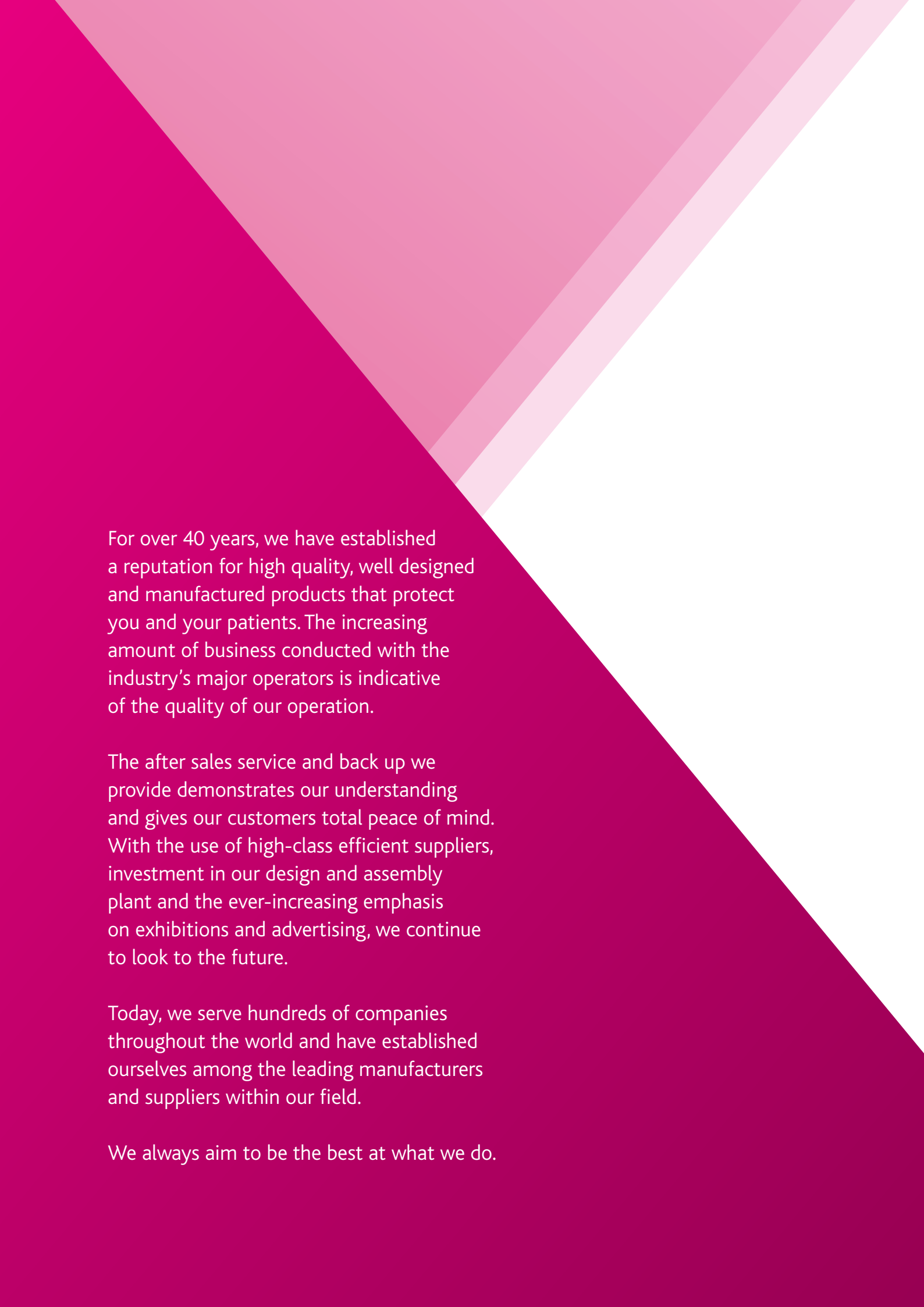




# Kenex

**Product portfolio price list**  
Issue 23



For over 40 years, we have established a reputation for high quality, well designed and manufactured products that protect you and your patients. The increasing amount of business conducted with the industry's major operators is indicative of the quality of our operation.

The after sales service and back up we provide demonstrates our understanding and gives our customers total peace of mind. With the use of high-class efficient suppliers, investment in our design and assembly plant and the ever-increasing emphasis on exhibitions and advertising, we continue to look to the future.

Today, we serve hundreds of companies throughout the world and have established ourselves among the leading manufacturers and suppliers within our field.

We always aim to be the best at what we do.



## Suspension systems

- 2 Overhead radiation shields and lamps**
- 2 3001/TC – Ceiling track and carriage
- 3 Installation aids for shields and lamps**
- 3 300/P/012 – Ceiling void anchorage mount
- 3 300/P/004 – Ceiling mounting plate
- 3 300 – Ceiling column with twin pivots
- 3 Monitor suspension systems**
- 3 333 – Suspension systems for flat screen monitors



## Imaging accessories

- 22 Mobile holders for DR panels and cassettes**
- 22 1330 – Mobile DR detector and cassette holder
- 23 1305/8/1 – Mobile DR detector and cassette holder
- 23 1305/3/1 – Mobile cassette holder
- 23 Positioning aids**
- 23 1700/PC – Plastic coated foam pads
- 24 1701 – Sandbags
- 24 Film markers**
- 24 1206 – Radiopaque rules
- 24 1208 – Clip-on L & R markers
- 25 Patients chair**
- 25 1501/D – Patients imaging chair
- 25 Mobile pedestal**
- 25 1340/3 – Mobile pedestal for tableside controls
- 25 1340/3/LR – Mobile pedestal with attached radiation shield



## X-ray shielding

- 4 Overhead radiation shields**
- 5 354 – Upper body radiation shields - with a patient contour corner cut-out
- 5 354 – Upper body radiation shields - without a corner cut-out
- 5 351 – Upper body radiation shields - with a patient contour corner cut-out
- 5 351 – Upper body radiation shields - without a corner cut-out
- 6 350 – Eyes and thyroid radiation shields
- 6 Overhead radiation shields**
- 6 308 – Overhead flexible lead shield
- 6 Radiation shields and lamps - complete systems**
- 7 350 – Eyes and thyroid shields and lamp combinations
- 7 351 – Upper body shields and lamp combinations
- 7 354 – Upper body shields and lamp combinations
- 8 Mobile radiation shields**
- 8 303 – Mobile protective shield
- 8 310/B-3 – Height adjustable mobile shield
- 8 317 – Flexible protective side panel
- 9 326/05 – Height adjustable over-table shield
- 9 314/05 – Flexible panel mobile shields
- 10 Table mounted lower body shields**
- 10 312 – Table shields with a double friction joint
- 12 312 – Table shields with single friction joint
- 14 312 – Top shield options and replacements
- 14 Wall racks for table mounted lower body shields
- 15 312 – Collision resilient table mounted lower body shields
- 16 313 – Head end table shield
- 16 311/TC – Upper foot end table shield
- 17 Fixed radiation shields**
- 17 320/323/325 – Radiation shielding materials



## Protective clothing

- 26 X-ray protective clothing**
- 26 Order guide and colour guide
- 27 907 – LytaType double sided apron
- 28 905 – LytaType wrap-around coat
- 29 903 – LytaType wrap-around coat
- 30 910 – LytaType half back apron
- 31 909 – LytaType cross back apron
- 31 911 – LytaType cross back apron
- 32 915 – LytaType jacket (vest)
- 32 919 – LytaType kilt (skirt)
- 33 917 – LytaType double-sided short top apron
- 33 921 – LytaType demi apron
- 33 921-V – LytaType demi apron
- 34 951/05 – Thyroid collar
- 34 953/05 – Thyroid collar
- 34 278 – Ovary shields
- 34 299 – T shape gonad shields
- 35 265 – Radiation protective glasses
- 35 215 – Seamless x-ray gloves
- 35 Apron storage racks**
- 35 100 – Multiform apron wall console
- 36 102/C – Mobile swivel arm apron rack
- 36 100 – Kilt / skirt hooks
- 36 103 – Mobile apron rail
- 37 Terms and conditions**



## Operating lamps

- 18 Operating and examination lamps**
- 19 Additional sterilisable handle
- 19 LED 130F – Focusable LED examination lamps
- 19 LED 150F – Focusable LED examination and small operating lamps
- 20 Mobile LED 2SC/3SC/130F
- 20 LED 2SC – Single colour LED minor operating lamp
- 21 LED 2MC – Multi colour LED minor operating lamp
- 21 LED 3SC – Single colour surgical LED lamp
- 21 LED 3MC – Multi colour surgical LED lamp
- 21 LED 300 DF – Single colour surgical LED lamp





## Suspension systems

Our suspension systems are in use worldwide and safely support numerous medical devices

Including; radiation protective shields, lamps, monitors, contrast injectors, video cameras and x-ray equipment control consoles, either alone or in combination. Customised solutions are also tailored to suit specific requirements.

The sturdy suspension arms used comprise a 95 cm or 75 cm extension arm with a 91 cm spring arm, for weight loads up to 18 kg and provide movement flexibility over a wide area. A patented safety collar prevents separation of the supported device, while the design of the twin pin steel ceiling column ensures the maximum level of safety when the assembly of one or two devices is stationary mounted on the ceiling, or attached to the carriage in our ceiling track.

Our patented ceiling track has a unique profile that holds an optional cable management system, where signal and supply cables are enclosed within an integrated energy chain. This arrangement eliminates the need for an unsightly cable festoon system where external sliding cable hangers restrict movement. The enhanced strength of the track enables two independently movable carriages to be incorporated with each carrying a ceiling column with two fully loaded suspension arms.

Systems are UL classified, manufactured for safety and essential performance to international standard IEC 60601-1 3rd Edition, and CE certified to European Council Directive 93/42/EEC concerning medical device.

LED2 and 354/P/76-0031



## Overhead radiation shields and lamps Model 3001

### 3001/TC – Ceiling track and carriage (new track design patented by Kenex)

Please note: model 3001/TC/250 track and carriage is included with some radiation shields. See product codes ending -0031 on pages 5 and 6 and other devices on page 7.

Heavy duty aluminium tracks supplied with a smooth running carriage.

- Shields with a ceiling column, i.e., 354/P/76-001 can be fixed to a carriage.
- 2 carriages can be fitted to provide independent movement of up to 4 devices.
- Optional cable management system (energy chain) for lamps or monitors etc.
- The cable management fits tidily within the track and eliminates hanging cables.
- Design simplifies installation to Unistrut (or equivalent) ceiling channels.

Description	Product code	Price
250 cm long ceiling track plus 1 carriage	3001/TC/250	£1,500.00
420 cm long ceiling track plus 1 carriage	3001/TC/420	£2,227.00
<b>Optional extras</b>		
Extra carriage (maximum 2 per track)	3001/3.25	£729.00
Energy chain (per carriage) for 250 cm long tracks	3001/TC/250/EC	£296.00
Energy chain (per carriage) for 420 cm long tracks	3001/TC/420/EC	£337.00



3001/TC track with cable management (energy chain)  
(Attached vertical column not included)

## Installation aids for shields and lamps

### Model 300

#### 300/P/012 – Ceiling void anchorage mount

This support structure is designed for installation in the space between a suspended ceiling and a solid ceiling above. Maximum distance: 90 cm. (Column not included).

- Supplied disassembled so alterations can be made to suit the exact distance.
- Once assembled, installed and adjusted it provides an upright and solid platform.

Description	Product code	Price
Ceiling anchorage mount	300/P/012	£668.00



300/P/012

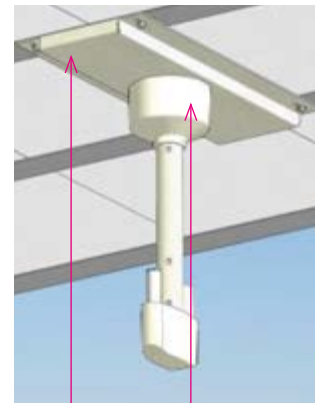


#### 300/P/004 – Ceiling mounting plate

This mounting plate provides an effective support for the static installation of the ceiling column supplied with shields, lamps and monitor suspension systems.

- The plate can be fixed above or below a suspended ceiling.

Description	Product code	Price
73.5 x 34 x 3.8 cm steel mounting plate, (column not included)	300/P/004	£322.00



300/P/004

300/COLUMN-2

#### 300 – Ceiling column with twin pivots

Description	Product code	Price
80 cm long + 1 pivot electrically wired for arm and lamp	300/COLUMN-2	£623.00
Other lengths 60 and 100 cm with the same specification	300/COLUMN/60 or 100	£623.00

## Monitor suspension systems

### Model 333

#### 333 – Suspension systems for flat screen monitors with a 5-10 kg weight range

- 186cm reach extension/spring arm and monitor holder with 100 mm VESA mount.
- Supplied with 80 cm long twin pivot column with 60 or 100 cm lengths available.
- External cabling only.

Description	Product code	Price
<b>Stationary system</b>		
Monitor holder, suspension arm and fixed ceiling column	333/1/510/001	£1,571.00
<b>Ceiling track system</b>		
Monitor holder, arm, column, 250 cm track & carriage	333/1/510/0031	£3,071.00
<b>Wall mounted system</b>		
Monitor holder, arm and wall fixing bracket	333/1/510/005	£1,212.00
<b>Combine System</b>		
Monitor holder and arm, fit onto an existing ceiling column	333/1/510/006	£1,133.00



333/1/510/0031

Model 333/1/510/001 can be used with an existing track. Model 333/1/510/006 can be used with a shield.



## X-ray shielding

Our comprehensive range of x-ray shielding equipment significantly reduces secondary radiation exposure to staff during all applications.

The installation of ceiling suspended lead acrylic or lead glass shields minimise dose to the head, lens of the eye and upper body, and importantly provide instant access to the patient in an emergency. Tableside mounted shields protect the lower body and extremities and when combined, provide a safe and effective zone of occupancy. Mobile over-table and alongside table versions are also available.

3D Computer-aided design (CAD) files to assist with room planning and layout are available on request.



354/P/76-001

### > Overhead radiation shields Models 354/351/350/308

**Kenex radiation shields - provide optimal protection**

#### Stationary installation

Protective shields for static installation on the ceiling are supplied with a suspension arm and an 80 cm long ceiling column as standard, with other lengths of 60 cm and 100 cm available. The suspension arm comprises an extension and spring arm combination with a combined reach of 186 cm. The ceiling column has a spare pivot, equipped with an internal electrical connector, for mounting a second suspension arm and another device; such as the lamp illustrated.

#### Movable installation

Shields for guidance across the ceiling are additionally supplied with a 250 cm long heavy duty aluminium ceiling track with a movable carriage. Track mounted devices can be moved and positioned in the working area or parked up to 5.9 meters away. An optional second carriage provides independent movement of further attached devices, such as injectors, monitors, lamps or extra shields.



354/P76-LED150F-0031



\*Shields with suffix -001 can be used with a ceiling track. See page 2.

## 354 – Upper body radiation shields

### With a patient contour corner cut-out

- Material: transparent lead acrylic, lead equivalent 0.5 mm.
- Portrait orientation, but central ball and socket joint provides rotational and tilting movement.

Description	Product code	Price
76 cm high x 61 cm wide shield with a suspension arm and ceiling column*	354/P/76-001	£3,242.00
76 x 61 cm shield with arm, column and 250 cm heavy duty alloy ceiling track	354/P/76-0031	£4,742.00
<b>Option:</b> flexible 0.5 mm lead panels fitted around lower profile	354/P/LR	£475.00



354/P/76-001

354/P/LR

## 354 – Upper body radiation shields

### Without a corner cut-out

- Material: transparent lead acrylic, lead equivalent 0.5 mm.
- Portrait orientation, but central ball and socket joint provides rotational and tilting movement.

Description	Product code	Price
76 cm high x 61 cm wide shield with a suspension arm and ceiling column*	354/76-001	£3,242.00
76 x 61 cm shield with arm, column and 250 cm heavy duty alloy ceiling track	354/76-0031	£4,742.00
<b>Option:</b> flexible 0.5 mm lead panels fitted across 61 cm width	354/LR/61	£410.00
40 cm high x 50 cm wide shield with a suspension arm and ceiling column*	354/45-001	£2,569.00
40 x 50 cm shield with arm, column and 250 cm heavy duty alloy ceiling track	354/45-0031	£4,069.00
<b>Option:</b> flexible 0.5 mm lead panels fitted across 50 cm width	354/LR/50	£372.00



354/76-001

## 351 – Upper body radiation shields

### With a patient contour corner cut-out

- Material: transparent lead acrylic, lead equivalent 0.5 mm.
- Landscape orientation.

Description	Product code	Price
60 cm high x 80 cm wide shield with a suspension arm and ceiling column*	351/P/68-001	£3,434.00
60 x 80 cm shield with arm, column and 250 cm heavy duty alloy ceiling track	351/P/68-0031	£4,934.00
<b>Option:</b> flexible 0.5 mm lead panels fitted around lower profile	351/P/LR	£476.00



351/P/68-001

## 351 – Upper body radiation shields

### Without a corner cut-out

- Material: transparent lead acrylic, lead equivalent 0.5 mm.
- Landscape orientation.

Description	Product code	Price
60 cm high x 80 cm wide shield with a suspension arm and ceiling column*	351/68-001	£3,434.00
60 x 80 cm shield with arm, column and 250 cm heavy duty alloy ceiling track	351/68-0031	£4,934.00
<b>Option:</b> flexible 0.5 mm lead panels fitted across 80 cm width	351/LR/80	£410.00
40 cm high x 50 cm wide shield with suspension arm and ceiling column*	351/45-001	£2,600.00
40 x 50 cm shield with arm, column and 250 cm heavy duty alloy ceiling track	351/45-0031	£4,100.00
<b>Option:</b> flexible 0.5 mm lead panels fitted across 50 cm width	351/LR/50	£372.00



351/68-001

\*Shields with suffix -001 can be used with a ceiling track. See page 2.



## > Overhead radiation shields continued

### 350 – Eyes and thyroid radiation shields

- Material: Lead glass, with minimum 2.2 mm lead equivalent.
- Fitted flexible lower curtain: lead equivalent 0.5 mm.

Description	Product code	Price
40 cm high x 50 cm wide shield with a suspension arm and ceiling column*	350/45-001	£2,552.00
40 x 50 cm shield with arm, column and 250 cm heavy duty alloy ceiling track	350/45-0031	£4,052.00
30 cm high x 40 cm wide shield with a suspension arm and column*	350/34-001	£2,327.00
30 x 40 cm shield with arm, column and 250 cm heavy duty alloy ceiling track	350/34-0031	£3,827.00



350/45-001

### 308 – Overhead flexible lead shield

Overlapping panels with a fold-up centre section retained by a press stud.

- Material: flexible 0.5 mm Pb equivalent lead vinyl.
- Size: 50 cm high x 100 cm wide.
- Ceiling model has an 80 cm long ceiling column. 60 & 100 cm lengths are optional.

Other sizes available on request.

Description	Product code	Price
Shield with a suspension arm and ceiling column*	308/50100-001	£1,559.00
Shield with a suspension arm and wall mounting bracket	308/50100-005	£1,250.00



308

For track systems please see page 2.

## > Radiation shields and lamps - complete systems

### Models 350/351/354

#### Static ceiling mounted or ceiling track mounted radiation shields and lamp combinations

All our lamps have daylight characteristics, light field focussing, dimming with on/off switch, sterilisable handle, power supply unit and a 950/910 mm suspension arm. Model 350 protective shields include a 2.2 mm lead equivalent glass window with an attached 0.5 mm Pb flexible curtain. Models 351 and 354 shields include 0.5 mm lead equivalent transparent acrylic with an optionally attached 0.5 mm Pb flexible curtain.

All shields are supplied with a suspension arm and an 80 cm long twin pivot ceiling column as standard. Other lengths of 60 cm and 100 cm are available as a no cost option.

See page 4 for further shield details and page 18 for lamps. For mounting systems please see page 2 and 3.

\*Shields with suffix -001 can be used with a ceiling track. See page 2.



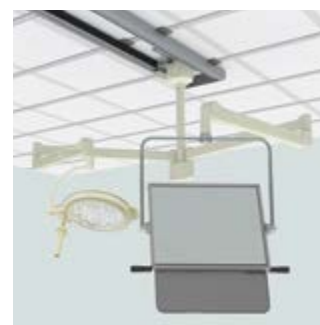
## 350 – Eyes and thyroid shields and lamp combinations

### Stationary system: with a fixed ceiling column

Description	Product code	Price
40 x 50 cm shield, static column and lamp: LED 130F*	350/45/LED130F-001	£5,376.00
40 x 50 cm shield, static column and lamp: LED 150F*	350/45/LED150F-001	£6,254.00
40 x 50 cm shield, static column and lamp: LED 300 DF*	350/45/LED3DF-001	£8,281.00

### Movable solution: with ceiling column and 250 cm HD aluminium ceiling track

Description	Product code	Price
40 x 50 cm shield, column, ceiling track and lamp: LED 130F	350/45/LED130F-0031	£6,876.00
40 x 50 cm shield, column, ceiling track and lamp: LED 150F	350/45/LED150F-0031	£7,754.00
40 x 50 cm shield, column, ceiling track and lamp: LED 300 DF	350/45/LED3DF-0031	£9,781.00



350

## 351 – Upper body shields and lamp combinations

### Stationary system: with a fixed ceiling column

Description	Product code	Price
60 x 80 cm shield, static column and lamp: LED 130F*	351/P68/LED130F-001	£6,258.00
60 x 80 cm shield, static column and lamp: LED 150F*	351/P68/LED150F-001	£7,136.00
60 x 80 cm shield, static column and lamp: LED 300 DF*	351/P68/LED3DF-001	£9,163.00

### Movable solution: with ceiling column and 250cm HD aluminium ceiling track

Description	Product code	Price
60 x 80 cm shield, column, ceiling track and lamp: LED 130F	351/P68/LED130F-0031	£7,758.00
60 x 80 cm shield, column, ceiling track and lamp: LED 150F	351/P68/LED150F-0031	£8,636.00
60 x 80 cm shield, column, ceiling track and lamp: LED 300 DF	351/P68/LED3DF-0031	£10,663.00



351

## 354 – Upper body shields and lamp combinations

### Stationary system: with a fixed ceiling column

Description	Product code	Price
76 x 61 cm shield, static column and lamp: LED 130F*	354/P76/LED130F-001	£6,066.00
76 x 61 cm shield, static column and lamp: LED 150F*	354/P76/LED150F-001	£6,944.00
76 x 61 cm shield, static column and lamp: LED 300 DF*	354/P76/LED3DF-001	£8,971.00

### Movable solution: with ceiling column and 250cm HD aluminium ceiling track

Description	Product code	Price
76 x 61 cm shield, column, ceiling track and lamp: LED 130F	354/P76/LED130F-0031	£7,566.00
76 x 61 cm shield, column, ceiling track and lamp: LED 150F	354/P76/LED150F-0031	£8,444.00
76 x 61 cm shield, column, ceiling track and lamp: LED 300 DF	354/P76/LED3DF-0031	£10,471.00

For operating lamps please see page 18.

\*Shields with suffix -001 can be used with a ceiling track. See page 2.



354



Suspension systems



X-ray shielding



Operating lamps



Imaging accessories



Protective clothing

# **Mobile radiation shields** Models 303/310/317/326/314

## 303 – Mobile protective shield

Solid panel design: 2.24 mm lead core face in plastic laminate edged in satin aluminium with 2.2 mm Pb equivalent clear **lead glass** window.

### Standard mobile shields

Fitted with 30 cm high x 40 cm wide window

Description	Product code	Price
Standard shield 200 cm high x 75 cm wide	303/B2/75	£2,173.00
Standard shield 200 cm high x 90 cm wide	303/B2/90	£2,364.00

### Panoramic mobile shield

Fitted with 60 cm high x 90 cm wide window

Description	Product code	Price
Panoramic shield 200 cm high x 90 cm wide	303/B3/90	£3,364.00



303/B2/90

303/B3/90

## 310/B-3 – Height adjustable mobile shield

Original Kenex design exceeds the demands of professionals.

- Ideal for use in confined areas close to the table side.
- The counterbalanced lead acrylic window can be raised in an instant or lowered to gain access to the patient.
- Optional full width rail can be used for equipment hand controls.
- Occupies very little space when not in use.

Window 70 cm wide (0.5 mm Pb equivalent): height range 115 - 188 cm.

Lower steel panel 78 cm wide (1.0 mm Pb equivalent).

Description	Product code	Price
Height adjustable shield	310/B-3	£2,865.00
Optional rail: 10 x 25 x 769 mm	310/3.1	£216.00
Optional rail: 8 x 25 x 769 mm	310/9.1	£216.00



310/B-3

## 317 – Flexible protective side panel

A flexible curtain on a double-jointed pivotal arm can be factory fitted to the side, or to both sides of the above mobile shield model 310/B-3.

- One curtain, when fully extended increases the shield width by 68 cm.
- Pivotal arm and curtain can swivel round to form a curved side wing.
- Flexible 0.5 mm curtain is 85 cm long.
- Curtain folds across the front when not in use.

Description	Product code	Price
Protective side panel (per side)	317/05-01	£749.00



317

## 326/05 – Height adjustable over-table shield

All the attributes of ceiling and table mounted shields in one mobile unit.

- Creates a safe working zone.
- Significantly reduces exposure to radiation.
- The counterbalanced lead acrylic window can be positioned over the patient and height adjusted to suit the table.
- A flexible curtain is suspended from the cantilevered widow and does not impede C-arm movements.
- The lower sliding curtain may be extended towards the tableside to form a continuous barrier.

Window: 50 x 116 cm, 0.5 mm Pb equivalent, height range 145-177 cm.

Curtain: 45 - 80 cm wide x 80 cm high (0.5 mm Pb equivalent).

Description	Product code	Price
Over-table mobile shield	326/05	£4,995.00



326/05



## 314/05 – Flexible panel mobile shields

Mobile panel is height adjustable with spring assistance.

- Height range: 85 cm to 120 cm.
- Single flexible panel model is 70 cm wide x 60 cm high.
- Double panel version has fixed extra protection below.
- Lead equivalent: 0.5 mm.

Description	Product code	Price
Single flexible panel mobile shield	314/05-01	£594.00
Double flexible panel mobile shield	314/05-02	£875.00



314/05-01



314/05-01



314/05-02



## Table mounted shields with double friction joint Model 312

### Table mounted lower body shields with double friction joint

Shields with a double-jointed pivotal arm can be moved laterally towards the patient or swivelled away from the table to form a 63 cm wide 0.5 mm Pb protective wing. The central self-adjusting friction joint ensures that it remains in the desired position. Shields have 70 cm high full width flexible curtains that conform around C-arm equipment without gaping. **Shields with overlapping panels are a no cost option.**

- Kenex shields can be used on both sides of the table and fit onto 25 mm high tableside accessory rails with a thickness range from 7.7 mm to 10 mm.
- 78 cm and 92 cm wide shields are supplied for attachment to 25 mm high tableside rails, but can also be configured on site to fit onto 29 mm high rails.



312/E-022

### 312 – Table shields

#### 114 cm wide with a double friction joint

- All 114 cm shields have a 35 cm long accessory rail to keep equipment controls close to hand and the curtain behind provides extra protection. The rail is available in two sizes.
- These shields can also overhang the tableside rail to be positioned nearer the head end.

Description	350 x 10 x 25 mm accessory rail	350 x 7.7 x 25 mm accessory rail	Price
Table shield with a 57 cm wide fold-down top shield	312/E-022	312/E-022/8	£2,006.00
Alternative model with overlapping curtain panels	312/E-022/P	312/E-022/8P	
One piece table shield with a 57 cm wide lift-off top shield	312/E-021	312/E-021/8	£1,725.00
Alternative model with overlapping curtain panels	312/E-021/P	312/E-021/8P	
One piece table shield without a top shield	312/E-020	312/E-020/8	£1,473.00
Alternative model with overlapping curtain panels	312/E-020/P	312/E-020/8P	
Two piece collision resilient shield with a 57 cm lift-off top*	312/E-023	312/E-023/8	£2,132.00

\*The pivotal arm of 312/E-023 moves up if struck from below by a C-arm. See page 15.



312/E-022



Accessory rail

#### 92 cm wide with a double friction joint

- All 92 cm wide shields fit onto 25 mm high tableside rails, but can also be configured on site to fit onto tables with 29 mm high rails.

Description	Product code	Price
One piece table shield with a 57 cm wide fold-down top shield	312/E-012	£1,531.00
Alternative model with overlapping curtain panels	312/E-012/P	
One piece table shield with a 57 cm wide lift-off top shield	312/E-011	£1,250.00
Alternative model with overlapping curtain panels	312/E-011/P	
One piece table shield without a top shield	312/E-010	£998.00
Alternative model with overlapping curtain panels	312/E-010/P	
Two piece collision resilient shield with a 57 cm lift-off top*	312/E-013	£1,657.00

\*The pivotal arm of 312/E-013 moves up if struck from below by a C-arm. See page 15.



312/E-012

## 312 – Table shields

114 cm wide with a double friction joint



312/E-022



312/E-022/P



312/E-021



312/E-021/P



312/E-020



312/E-020/P



312/E-023

## 92 cm wide with a double friction joint



312/E-012



312/E-012/P



312/E-011



312/E-011/P



312/E-010



312/E-010/P



312/E-013



Suspension systems



X-ray shielding



Operating lamps



Imaging accessories



Protective clothing

## Table mounted shields with a single friction pivot Model 312

### Table mounted lower body shields with a single friction pivot

The pivitol arm can be swivelled away from the table to form a 50 cm wide 0.5 mm Pb protective wing. A self-adjusting friction pivot ensures that it remains in the desired position. Shields have 70 cm high full width flexible curtains that conform around C-arm equipment without gaping.

Shields with overlapping panels are a no cost option.

- Kenex shields can be used on both sides of the table and fit onto 25 mm high tableside accessory rails with a thickness range from 7.7 mm to 10 mm.
- 78 cm wide shields are supplied for attachment to 25 mm high tableside rails, but can also be configured on site to fit onto 29 mm high rails.

### 312 – Table shields 100 cm wide with a single friction pivot

- All 100 cm shields have a 35 cm long accessory rail to keep equipment controls close to hand and the curtain behind provides extra protection. The rail is available in two sizes.
- These shields can also overhang the tableside rail to be positioned nearer the head end.

Description	350 x 10 x 25 mm accessory rail	350 x 7.7 x 25 mm accessory rail	Price
Table shield with a 57 cm wide lift-off top shield	312/E-016	312/E-016/8	£1,548.00
Alternative model with overlapping curtain panels	312/E-016/P	312/E-016/8P	
Table shield without a top shield	312/E-015	312/E-015/8	£1,296.00
Alternative model with overlapping curtain panels	312/E-015/P	312/E-015/8P	



312/E-016

### 78 cm wide with a single friction pivot

- 78 cm shields fit onto 25 mm and 29 cm high tableside rails.

Description	Product code	Price
Table shield with a 57 cm wide lift-off top shield	312/E-006	£1,074.00
Alternative model with overlapping curtain panels	312/E-006/P	
Table shield without a top shield	312/E-005	£822.00
Alternative model with overlapping curtain panels	312/E-005/P	



312/E-006

## 312 – Table shields

**100 cm wide** with a single friction pivot



312/E-016



312/E-016/P



312/E-015



312/E-015/P

**78 cm wide** with a single friction pivot



312/E-006



312/E-006/P



312/E-005



312/E-005/P



## 312 – Top shield options and replacements

- Top shields are flexible and stand 25 cm above the tableside rail.
- 27 and 57 cm shields together give up to 95 cm wide upper protection.

Description	Product code	Price
Lift-off top (tall version 27 cm wide)	312/DS/3.30	£171.00
Lift-off top (short version 27 cm wide)	312/DS/3.41	£191.00
57 cm lift-off top replacement	312/DS/3.32	£252.00
57 cm fold-down top replacement	312/DS/3.33	£534.00
57 cm lift-off top replacement for collision resilient shield	312/DS/3.32/3	£349.00

### Wider upper protection options

57 cm tops used together with 27 cm tops provide the following total upper protection:-

57 cm wide top / shield width	27cm wide top shield	upper protection
57 cm top on 78 cm shield with:	1 off 312/DS/3.30	= 74 cm wide
57 cm top on 92 cm shield with:	2 off 312/DS/3.30	= 92 cm wide
57 cm top on 100 cm shield with:	1 off 312/DS/3.41	= 74 cm wide
57 cm top on 114 cm shield with:	1 each 312/DS/3.30 & 312/DS/3.41	= 92 cm wide



57cm wide top shield



312/DS/3.30



312/DS/3.41

## Wall racks for table mounted lower body shields

These racks provide a convenient storage location when shields are removed from the tableside.

Description	Product code	Price
Wall rack for a lower body shield	312/W-LB	£110.00
Wall rack for 1 x 57 cm wide top shield and 2 x 27 cm wide top shields (excluding fold down)	312/W-TOP	£110.00



312/W-TOP



312/W-LB



312/W-TOP (above)  
312/W-LB (below).

## Both sides of the table

Kenex table shields can be moved from one side of the table to the other in an instant by simply rotating the upper part 180° horizontally. The pivotal arm always faces the head end.



# Table mounted shield collision resilient Model 312

## Collision resilient table mounted lower body shields

Unique patented mechanism enables the pivotal arm to move up when in collision with C-arm equipment.

- Both models have a double-jointed pivotal arm supporting a 70 cm high 0.5 mm lead equivalent flexible protective curtain.
- The pivotal arm and curtain can move up when a C-arm is in contact from below.
- The curtain can move laterally close to the tableside or swivel away to form a protective wing.

## 312 – Collision resilient shield 114 cm wide with a double friction joint

- Fitted with a 35 cm long rail for equipment controls. (see below)
- Fits onto 25 mm high tableside rails.
- Provides extra protection behind attached equipment controls.
- Can be fitted to either sides of the table, with the pivotal arm always positioned towards the head end.

Description	350 x 10 x 25 mm accessory rail	350 x 7.7 x 25 mm accessory rail	Price
Collision resilient shield with 57 cm wide lift-off top	312/E-023	312/E-023/8	£2,132.00



312/E-023 with top shield removed

## 92 cm wide with a double friction joint

- Fits onto 25 mm high tableside rails or can be configured on site for 29 mm high rails.
- Can be fitted to either sides of the table, with the pivotal arm always positioned towards the head end.

Description	Product code	Price
Collision resilient shield with 57 cm wide lift-off top	312/E-013	£1,657.00



312/E-013 with top shield removed

## > Table mounted shields head & upper foot end

### Models 313/311

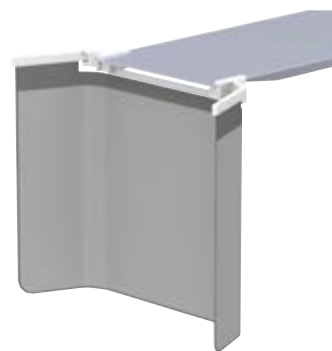
#### 313 – Head end table shield

This lower body shield substantially reduces exposure to scatter radiation emanating from the table or patient's body. It comprises a lightweight and durable structure with a fixed central section and two pivotal side arms supporting a flexible 0.5 mm lead equivalent curtain.

- The shield slides onto a carbon fibre table top and protects medical staff at the head end or others close-by.
- Pivotal arms can form 32 cm wide wings around the user or extend forward. Either side can be quickly repositioned to allow for full C-arm movement.
- Arms fold inwards when the shield is stored on the supplied wall rack.
- Size: approximately 120 cm wide (dependent on table width) x 80 cm high.

Please specify size and make of the table.

A downloadable pdf measurement sheet is available on request.



313/A2

Description	Product code	Price
Head end table shield and wall rack	313/A2	£2,730.00

#### 311/TC – Upper foot end table shield

This shield protects against scatter radiation and also helps protect against possible blood splashes during some interventional procedures.

- Designed for use across the table towards the foot end.
- Fits onto both 25 mm high tableside accessory rails (7.7 - 10 mm thick).
- Lead acrylic window 60 cm high x 80 cm wide (dependent on table width), with lower flexible curtain.
- Overall height: 90 cm.
- Lead equivalent protection throughout: 0.5 mm.

Please specify size and make of the table.

A downloadable pdf measurement sheet is available on request.

Description	Product code	Price
Table end upper shield	311/TC/004	£2,496.00



311/TC/004

## Fixed radiation shields

### Fixed radiation screens

Fixed radiation screens are custom built to any dimension with lead thicknesses of between 1 and 3.5 mm, and with large lead glass window incorporated to provide a clear view into the x-ray room.

Designs can be straight, with or without a fixed or hinged wing, free standing or wall attached. Screens are of solid construction with a lead core (of specified thickness), and are faced with plastic laminate, in a colour of choice. Work surfaces and storage (as illustrated) can also be included.

Description	Price
Fixed radiation screen	Price on request

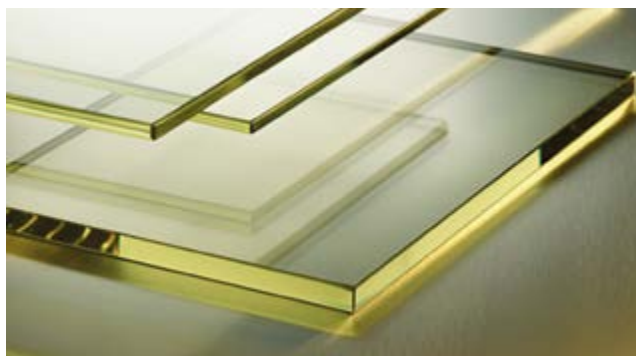


## Radiation shielding materials

### Models 320/323/325

Description	Product code	Price
<b>Flexible lead vinyl sheeting</b>		
0.5 mm Pb equivalent 95 cm wide. Price per linear metre	320/K/050/96	£185.00
<b>Lead glass – clear optical quality 2.2 mm Pb equivalent.</b>		
30 x 40 cm	323/2/3040	Price on request
40 x 50 cm	323/2/4050	Price on request
Larger sizes up to 100 x 200 cm		Price on request
<b>Clear lead acrylic (plastic).</b>		
0.5 mm Pb equivalent (12 mm thick)	325/054	Price on request

Other Pb values for the above materials are also available.



Lead glass



Lead acrylic



## Operating lamps

### Our modern ergonomic lamps create ideal examination and operating conditions

Such as daylight characteristics, cool light technology with almost non-existent heat dispersion, faceted multi-lenses for even illumination, high contrast colour rendering for recognition of colour tones and controls to alter the light field size and intensity. LED MC models enable the colour temperature values to be altered to create a range of settings according to preference or application. For example 4500 or 4750 Kelvin for cold-white or warm-white light.



LED 2SC & LED 2MC

## Operating and examination lamps

Lamps can be used in combination with radiation shields or separately, either as a static installation or as a movable unit in a ceiling track.

Outstanding illumination with high-contrast daylight characteristics, optimal colour reproduction and cool light technology are features of these examination and surgical lamps. Robust suspension arms, comprising a 95 cm extension with a 91 cm spring arm, provide extensive reaching capacity within a 372 cm diameter and a height adjustment of 118 cm. Mobile versions are available with stand by battery power.



LED 130F



LED 2SC & LED 2MC



LED 3SC & LED 3MC



LED 150F



LED 300 DF

## Additional sterilisable handle

Description	Product code	Price
Spare sterilisable handle. (available for all lights)	300/L/2115/0002	£79.00

## LED 130F – Focusable LED examination lamps

Light output 70,000 Lux

Colour rendering index >Ra 95, Focusable light field 14-25 cm diameter, Diming range 50% to 100% with on/off switch at lamp head, Colour temperature 4300K, Sterilisable handle, 19 LED's (life span >50,000h) included in 33 cm diameter lamp head, Supplied with a separate power supply unit(110-250V 50-60Hz) and housing.

Description	Product code	Price
LED 130F lamp and suspension arm only (for use with a Kenex ceiling radiation shield)	300/L-LED130F	£2,824.00
LED 130F lamp, suspension arm and ceiling column	300/CL-LED130F	£3,266.00
LED 130F lamp, suspension arm and wall fixing bracket	300/WL-LED130F	£2,957.00



LED 130F

## LED 150F – Focusable LED examination and small operating lamps

Light output 100,000 Lux

Colour rendering index >Ra 95, Focusable light field 16-25 cm diameter, Diming range 50% to 100% with on/off switch at lamp head, Colour temperature 4300K, Sterilisable handle, 26 LED's (life span >50,000h) included in 38 cm diameter lamp head, Supplied with a separate power supply unit (110-250V 50-60Hz) and housing.

Description	Product code	Price
LED 150F lamp and suspension arm only (for use with a Kenex ceiling radiation shield), incl. power supply	300/L-LED150F	£3,702.00
LED 150F lamp, suspension arm and ceiling column, includes power supply	300/CL-LED150F	£4,144.00
LED 150F lamp, suspension arm and wall fixing bracket, includes power supply	300/WL-LED150F	£3,835.00



LED 150F

### Lamp Upgrade

A 150F lamp head with LED technology, can replace an existing Kenex 130F lamp head, or older Triaflex lamp head, (with halogen bulbs), without the need to replace their existing suspension arms. LED 150F light output: 100,000 LUX.

Description	Product code	Price
LED 150F lamp head with separate electronic transformer (110-250V 50-60Hz) and housing	150F/400/3.1	£3,200.00

## › Operating and examination lamps continued

### Mobile Lamps with LED technology

#### LED 2SC mobile lamp

Light output 115,000 Lux

See below for lamp details.

Arm reach: 118 cm. Height range: 101 – 260 cm.

Description	Product code	Price
Mobile lamp with power supply	190/230/1200	£8,704.00
Mobile lamp with battery & charger for 3 hours use	190/230/1500	£10,750.00

#### LED 3SC mobile lamp

Light output 140,000 Lux

See page 21 for lamp details.

Arm reach: 118 cm. Height range 101 – 260 cm.

Description	Product code	Price
Mobile lamp with power supply	360/530/1200	£10,012.00
Mobile lamp with battery & charger for 3 hours use	360/530/1500	£12,058.00



LED 2SC & 3SC

### LED 130F & LED 150F mobile lamps

Light output 70,000 & 100,000 Lux

See page 19 for lamp details.

Description	Product code	Price
LED 130F mobile lamp with power supply Arm reach: 91 cm. Height range 91-214 cm	130/430/1300	£2,485.00
LED 150F mobile lamp with power supply Arm reach: 80 cm. Height range 94-202 cm	150/430/1300	£3,856.00



130/430/1300

### LED 2SC – Single colour LED minor operating lamp

Light output 115,000 Lux

- Colour rendering index >Ra 95, colour temperature 4500K and focusable light field 17-28 cm diameter.
- Touch panel light intensity control (5 - 100%) with on/off switch.
- Depth light and Endo light switching for increased intensity to central LED segments or where outer segments are turned off.
- 21 LED's (life span >50,000h) included in 49 cm diameter lamp head with sterilisable handle.
- Supplied with a separate power supply unit (110-250V 50-60Hz) and housing.

Description	Product code	Price
LED 2SC lamp and suspension arm only (for use with a Kenex ceiling radiation shield)	190/230/01	£5,985.00
LED 2SC lamp, suspension arm and ceiling column	190/230/03	£6,427.00

Additional sterilisable handle available for all lights see page 19.



LED 2SC & LED 2MC



## LED 2MC – Multi colour LED minor operating lamp

Light output 115,000 Lux

As LED 2SC but with 84 LED's and adjustable colour temperature range: 3750, 4000, 4250, 4500 and 4750 Kelvin.

Description	Product code	Price
LED 2MC lamp and suspension arm only (for use with a Kenex ceiling radiation shield)	180/230/01	<b>£7,516.00</b>
LED 2MC lamp, suspension arm and ceiling column	180/230/03	<b>£7,958.00</b>



LED 2SC & LED 2MC

## LED 3SC – Single colour surgical LED lamp

Light output 140,000 Lux

- Colour rendering index >Ra 95, colour temperature 4500K and focusable light field 17-28 cm diameter.
- Touch panel light intensity control (5 -100%) with on/off switch.
- Depth light and Endo light switching (for increased intensity to central LED segments or where outer segments are turned off).
- 28 LED's (life span >50,000h) included in 57 cm diameter lamp head with sterilisable handle.
- Supplied with a separate power supply unit (110-250V 50-60Hz) and housing.

Description	Product code	Price
LED 3SC lamp and suspension arm only (for use with a Kenex ceiling radiation shield)	360/530/01	<b>£7,186.00</b>
LED 3SC lamp, suspension arm and ceiling column	360/530/03	<b>£7,628.00</b>



LED 3SC & LED 3MC

## LED 3MC – Multi colour surgical LED lamp

Light output 140,000 Lux

As LED 3SC but with 112 LED's and adjustable colour temperature range: 3750, 4000, 4250, 4500 and 4750 Kelvin

Description	Product code	Price
LED 3MC lamp and suspension arm only (for use with a Kenex ceiling radiation shield)	370/530/01	<b>£9,446.00</b>
LED 3MC lamp, suspension arm and ceiling column	370/530/03	<b>£9,888.00</b>



LED 3SC & LED 3MC

## LED 300 DF – Single colour surgical LED lamp

Light output 140,000 Lux

- Colour rendering index >Ra 95, colour temperature 4500K.
- Step less dimming (50-100%) with on/off switch at lamp head.
- "Duo-Focus" system for merging and focusing the light field from 14-28 cm diameter.
- 36 LED's (life span >50,000h) included in 63 cm diameter lamp head with sterilisable handle.
- Supplied with a separate power supply unit (110-250V 50-60Hz) and housing.

Description	Product code
LED 300 DF lamp and suspension arm only (for use with a Kenex ceiling radiation shield)	340/630/01
LED 300 DF lamp, suspension arm and ceiling column	340/630/03



LED 300 DF

Additional sterilisable handle available for all lights see page 19.



Suspension systems



X-ray shielding



Operating lamps



Imaging accessories



Protective clothing



## Imaging accessories

We have been serving the worldwide medical community for over 45 years and use our experience to help our customers by providing only high performance accessories.

Those featured are designed in collaboration with medical professionals to provide innovative solutions to diagnostic imaging needs. All have been manufactured and tested to ensure they properly assist in obtaining quick and accurate results with the minimum of concern to the patient.

1330

### Mobile holders for DR panels and cassettes Model 1330/1305

#### 1330 – Mobile DR detector and cassette holder

Stable and compact design holds portable DR Panels and CR or film cassettes from 24 x 30 cm to 35 x 43 cm. Also holds full leg/spine image receptors of any length.

- Unlimited orientation for universal positioning possibilities.
- Telescopic width adjustable from 24.5 cm to 53.5 cm with no protruding parts.
- Height adjustable from floor level to 129 cm.
- Counterbalance mechanism included for effortless raising or lowering.
- Overhangs table or trolley by up to 62 cm.
- Accepts cassettes and image receptors up to 30 mm thick.
- Large castors with roll and swivel locks ensure effortless movement.
- Castors are fitted with guards to prevent the pedestal running over cables.
- Heavy base and low centre of gravity gives added stability.

Description	Product code	Price
Mobile Detector Holder: Counterbalance load 6.7kg	1330/3	£2,787.00
Mobile Detector Holder: Counterbalance load 4.2kg	1330/4	£2,787.00
Mobile Detector Holder: Counterbalance load 2.5kg	1330/5	£2,787.00



## 1305/8/1 – Mobile DR detector and cassette holder

Suitable for portable DR Panels and CR or film cassettes.

- Unlimited orientation for universal positioning possibilities.
- Telescopic width adjustable from 24.5 cm to 53.5 cm.
- Holds full leg/spine image receptors of any length.
- Not counterbalanced, but with easy height adjustment from floor level to 142 cm.
- Overhangs table or trolley by up to 49 cm.
- Accepts image receptor/cassette up to 30 mm thick of any length.
- Heavy base and low centre of gravity gives added stability.

Description	Product code	Price
Mobile Detector Holder:	1305/8/1	£1,418.00



1305/8/1

## 1305/3/1 – Mobile cassette holder

Cassettes or cassette-sized image receptors can be positioned at any angle.

- A versatile holder with universal applications.
- Telescopic width adjustable from 24.5 cm to 53.5 cm.
- Not counterbalanced, but with easy height adjustment from floor level to 120 cm.
- Ideal for routine lateral 'shoot-through' radiographs.
- Forward reach from column to cassette front: 36 cm.
- Accepts cassettes size image receptors up to 30 mm thick.

Description	Product code	Price
Mobile Cassette Holder	1305/3/1	£918.00



1305/3/1

## Positioning aids Models 1700/1701

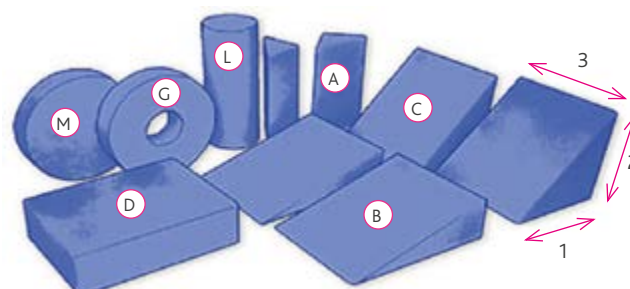
### 1700/PC – Plastic coated foam pads

These positioning aids are made from high quality polyester foam with a water-resistant polyurethane coating.

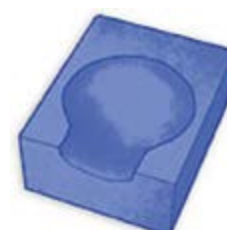
- Helps setting up the patient for examination or therapy.
- The skin-friendly covering prevents contaminants from penetrating the surface of the foam, which is easily wiped clean.

Note: Edge shadows may be seen on some radiographs particularly at low kV values.

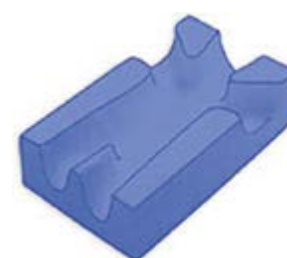
Note: Minimum order value £350.00 for foam pads. Surcharge below minimum order value: £45.00.



Description	Key	Width 1	Height 2	Length 3	Product code	Price
Wedge small 45	A	8.5 cm	8.5 cm	20 cm	1700/PC-A	£15.00
Wedge 15	B	25 cm	7 cm	20 cm	1700/PC-B	£20.00
Wedge large 45	C	18 cm	18 cm	20 cm	1700/PC-C	£25.00
Block	D	25 cm	7 cm	20 cm	1700/PC-D	£22.00
Round pad	M	20 cm diameter x 5cm thick			1700/PC-M	£18.00
Ring	G	25 cm diameter x 5cm thick			1700/PC-G	£20.00
Cylinder	L	35 cm diameter x 25cm long			1700/PC-L	£25.00
Supine head mould		20 cm	10 cm	25 cm	1700/PC-F	£42.00
Small baby mould		25 cm	12 cm	40 cm	1700/PCN1	£172.00
Large baby mould		35 cm	12 cm	53 cm	1700/PCN2	£182.00
Set of 7 Foam Shapes: 2 each of A, B & C plus 1 of D					1700/SET/PC/7	£142.00



1700/PC-F



1700/PCN1

## > Positioning aids continued

### 1701 – Sandbags

Supplied with or without a handle. Inner bag limp filed with silica sand. Outer bag nylon coated.

Size	Weight (approximate)	Product code	Price
8 x 24 cm	0.7 kg	1701/02	£28.00
10 x 30 cm	1.0 kg	1701/28	£28.00
16 x 30 cm	1.7 kg	1701/06	£31.00
16 x 40 cm	2.3 kg	1701/07	£36.00
16 x 50 cm	2.8 kg	1701/08	£43.00
16 x 60 cm	3.4 kg	1701/09	£48.00
20 x 20 cm	1.4 kg	1701/18	£31.00
20 x 30 cm	2.1 kg	1701/29	£34.00
24 x 24 cm	2.0 kg	1701/10	£34.00
30 x 30 cm	3.2 kg	1701/15	£48.00
Reinforced handle fitted to any of the above sandbags		add/H to product code	£17.00



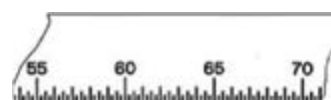
1701

## > Film markers

### Models 1206/1208

### 1206 – Radiopaque rules

Description	Product code	Price
100 cm Rule with 2 mm graduations	1206/1	£275.00
50 cm Rule with 2 mm graduations	1206/4	£193.00
30 cm Rule with 5 mm graduations	1206/2	£160.00



1206

### 1208 – Clip-on L & R markers

Peel-proof plastic coated metal and colour coded.

Description	Product code	Price
L & R Clip-On Marker (A-P) colour coded BLUE	1208/1	£6.00
L & R Clip-On Marker (P-A) colour coded RED	1208/2	£6.00



1208

## Patients chair Model 1501

### 1501/D – Patients imaging chair

This chair is ideal for a range of imaging procedures.

- Hydraulic operation alters the seat height between 55 and 70 cm.
- Height adjustment can be made with ease, regardless of the weight of a seated patient.
- A single lever can raise, lower or lock the rotation of the large and comfortable seat.
- The back and arm rests are held securely yet can be removed and replaced in seconds.
- Castors have rolling and swivel action brakes, so any locked pair will prevent movement.

Description	Product code	Price
Patients' Imaging Chair	1501/D	£1,250.00



1501/D with back  
& arms removed

1501/D

## Mobile Pedestal Models 1340/3 / 1340/3/LR

### 1340/3 – Mobile pedestal for tableside controls

This ergonomic mobile pedestal is designed to hold tableside equipment controls.

- 80 cm wide rails arranged in two tiers can accommodate several control modules.
- Both tiers are individually adjustable for height to suit controls and operator.
- The lower rail protrudes forward from the upper rail by 16 cm for a step wise setup.
- A heavy base with a 61 x 72 cm footprint provides a low centre of gravity and guarantees stability.
- Large twin wheel castors with roll and swivel locks ensure effortless movement.
- Castors are fitted with guards to prevent the pedestal running over cables.
- Overall height 124 cm

Description	Product code	Price
Mobile pedestal with 80 cm wide rails (7.7 x 25 mm section)	1340/3	£1,867.00
Mobile pedestal with 80 cm wide rails (10 x 25 mm section)	1340/3/10	£1,867.00



1340/3

### 1340/3/LR – Mobile pedestal with attached radiation shield

Mobile pedestal as model 1340/3 but with an attached 80 cm wide 0.5 mm lead equivalent flexible protective curtain.

Description	Product code	Price
Mobile pedestal 80 cm rails (7.7 x 25 mm section) and shield	1340/3/LR	£2,407.00
Mobile pedestal 80 cm rails (10 x 25 mm section) and shield	1340/3/10/LR	£2,407.00



1340/3/LR



## Quality and comfort

Current diagnostic and therapeutic procedures are often lengthy with x-ray protective clothing worn for extended periods.

It is therefore more important than ever that it correctly fits both the wearer and the application. Our extended range of LytaType x-ray protective clothing achieves these essential occupational health requirements by ensuring it is well tailored, flexible and comfortable to wear.

Our protective clothing is CE marked in accordance with EU Directive 89/686/EEC relating to personal protective equipment and properly includes the mandatory four digit number of a Notified Body. The flexible inner lead based layers provide protection in accordance with international standard IEC 61331-1. These attributes are your guarantee of high quality and safety.



907 Pocket 900/001 shown is an optional extra

## X-ray protective clothing Order guide

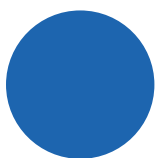
Please follow these instructions when ordering

To order please specify: 1. Model description, 2. Model number, 3. Lead equivalent, 4. Size, 5. Length taken from the middle shoulder, 6. Colour see below, 7. Any optional item.

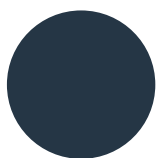
All of our *LytaType* personal x-ray protective clothing can be tailor made to your personal requirements

A downloadable order guide and tailor made measurements sheet is available on request.

### *LytaType* colours and codes



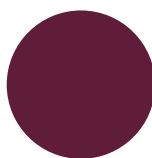
Royal  
02



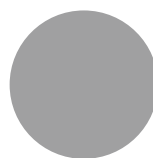
Navy  
04



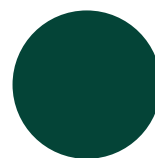
Poppy  
11



Burgundy  
12



Silver grey  
40



Bottle green  
41

Please note the colours shown are approximate. A colour swatch is available on request.



## X-ray protective clothing

### 907 – LytaType double sided apron

Very popular design with a shoulder clip and fastenings on both sides. Fitted with padded shoulders for extra comfort.

#### Small for chest sizes 80 – 90 cm

Lead equivalent Front and back	Length	Width shoulder	Width hip	Product code	Price
0.25 / 0.25 mm	85 cm	40 cm	60 cm	907/22/085/S	£201.00
"	90 cm	"	"	907/22/090/S	£201.00
"	100 cm	"	"	907/22/100/S	£212.00
"	110 cm	"	"	907/22/110/S	£229.00
0.35 / 0.35 mm	85 cm	40 cm	60 cm	907/33/085/S	£218.00
"	90 cm	"	"	907/33/090/S	£218.00
"	100 cm	"	"	907/33/100/S	£234.00
"	110 cm	"	"	907/33/110/S	£256.00
0.50 / 0.50 mm	85 cm	40 cm	60 cm	907/55/085/S	£262.00
"	90 cm	"	"	907/55/090/S	£262.00
"	100 cm	"	"	907/55/100/S	£288.00
"	110 cm	"	"	907/55/110/S	£317.00

#### Medium for chest sizes 90 – 104 cm

0.25 / 0.25 mm	90 cm	48 cm	60 cm	907/22/090/M	£201.00
"	100 cm	"	"	907/22/100/M	£212.00
"	110 cm	"	"	907/22/110/M	£229.00
0.35 / 0.35 mm	90 cm	48 cm	60 cm	907/33/090/M	£218.00
"	100 cm	"	"	907/33/100/M	£234.00
"	110 cm	"	"	907/33/110/M	£256.00
0.50 / 0.50 mm	90 cm	48 cm	60 cm	907/55/090/M	£262.00
"	100 cm	"	"	907/55/100/M	£288.00
"	110 cm	"	"	907/55/110/M	£317.00

#### Large for chest sizes 104 - 120cm

0.25 / 0.25 mm	90 cm	48 cm	75 cm	907/22/090/L	£232.00
"	100 cm	"	"	907/22/100/L	£244.00
"	110 cm	"	"	907/22/110/L	£264.00
0.35 / 0.35 mm	90 cm	48 cm	75 cm	907/33/090/L	£251.00
"	100 cm	"	"	907/33/100/L	£270.00
"	110 cm	"	"	907/33/110/L	£305.00
0.50 / 0.50 mm	90 cm	48 cm	75 cm	907/55/090/L	£302.00
"	100 cm	"	"	907/55/100/L	£332.00
"	110 cm	"	"	907/55/110/L	£391.00

Also available: -

Lead equivalent Front and back	Product code	Price
Front 0.35 mm, back 0.25 mm @ 0.35 / 0.35 mm prices less 4%	907/32/add length/add size	
Front 0.50 mm, back 0.25 mm @ 0.50 / 0.50 mm prices less 15%	907/52/add length/add size	
Front 0.50 mm, back 0.35 mm @ 0.50 / 0.50 mm prices less 12%	907/53/add length/add size	
Please add length and S, M, or L (small, medium or large) to the applicable product code.		
Example: 0.35 front (3), 0.25 back (2), 90 cm long and medium size:	907/32/090/M	£209.28

A downloadable order guide and tailor made measurements sheet is available on request. For colours please see page 26.



907  
Pocket 900/001 shown  
is an optional extra.



## > X-ray protective clothing continued

### 907 – Optional extras

Description	Product code	Price
Pocket	900/001	£21.00
Embroidery in a position to be specified	9/B20	£19.00
Lumbar support belt elasticated type transfers weight to the hips	9/B15	£57.00
Front fastening belt with Velcro closure	9/B16	£27.00
Back fastening belt with Velcro closure	9/B17	£27.00
Twin shoulder clips allow apron to 'fall-away' after use	9/B18	£52.00
Right side closed fastenings on the shoulder and left side	9/B19	£16.00



9/B15

A downloadable order guide and tailor made measurements sheet is available on request. For colours please see page 26.

### 905 – *Lyta* Type wrap-around coat

Front opening all-round coat with front Velcro fastening, fitted with padded shoulders for extra comfort. Wide front doubles the stated protection at the overlap.

Small for chest sizes 80 – 90 cm

Protection is double where the front of the apron overlaps

Lead equivalent Front and back	Length	Fit	Product code	Price
0.25 / 0.25 mm	85 cm	Slim fit	905/22/085/S	£243.00
"	90 cm	"	905/22/090/S	£243.00
"	100 cm	"	905/22/100/S	£255.00
"	110 cm	"	905/22/110/S	£271.00
0.25 / 0.35 mm	85 cm	"	905/23/085/S	£255.00
"	90 cm	"	905/23/090/S	£255.00
"	100 cm	"	905/23/100/S	£272.00
"	110 cm	"	905/23/110/S	£288.00
0.35 / 0.35 mm	85 cm	"	905/33/085/S	£283.00
"	90 cm	"	905/33/090/S	£283.00
"	100 cm	"	905/33/100/S	£301.00
"	110 cm	"	905/33/110/S	£323.00

Medium for chest sizes 90 – 104 cm

Protection is double where the front of the apron overlaps

0.25 / 0.25 mm	90 cm	Medium fit	905/22/090/M	£243.00
"	100 cm	"	905/22/100/M	£255.00
"	110 cm	"	905/22/110/M	£271.00
0.25 / 0.35 mm	90 cm	"	905/23/090/M	£255.00
"	100 cm	"	905/23/100/M	£272.00
"	110 cm	"	905/23/110/M	£288.00
0.35 / 0.35 mm	90 cm	"	905/33/090/M	£283.00
"	100 cm	"	905/33/100/M	£301.00
"	110 cm	"	905/33/110/M	£323.00



905 with a wide front overlap

Optional extras shown: -  
Pocket 900/001  
9/B15 support belt,  
951/05 thyroid collar see page 34.

Large for chest sizes 104 – 120 cm

Protection is double where the front of the apron overlaps

Lead equivalent Front and back	Length	Fit	Product code	Price
0.25 / 0.25 mm	90 cm	Large fit	905/22/090/L	£280.00
"	100 cm	"	905/22/100/L	£294.00
"	110 cm	"	905/22/110/L	£312.00
0.25 / 0.35 mm	90 cm	"	905/23/090/L	£294.00
"	100 cm	"	905/23/100/L	£313.00
"	110 cm	"	905/23/110/L	£332.00
0.35 / 0.35 mm	90 cm	"	905/33/090/L	£326.00
"	100 cm	"	905/33/100/L	£347.00
"	110 cm	"	905/33/110/L	£372.00

Also available: -

Lead equivalent Front and back	Product code	Price
Front 0.25 mm, back 0.50 mm @ 0.25 / 0.25 mm prices plus 20%	905/25/add length/add size	
Front 0.35 mm, back 0.50 mm @ 0.25 / 0.25 mm prices plus 25%	905/35/add length/add size	
Front 0.50 mm, back 0.50 mm @ 0.25 / 0.25 mm prices plus 30%	905/55/add length/add size	
Please add length and S, M, or L (small, medium or large) to the applicable product code.		
Example: 0.25 front (2), 0.50 back (5), 90 cm long and medium size:	905/25/090/M	£291.60

## 905 – Optional extras

Description	Product code	Price
Pocket	900/001	£21.00
Embroidery in a position to be specified	9/B20	£19.00
Lumbar support belt elasticated type transfers weight to the hips	9/B15	£57.00
Thyroid collar	951/05	£65.00

A downloadable order guide and tailor made measurements sheet is available on request. For colours please see page 26.

## 903 – LytaType wrap - around coat

Front opening all-round coat with front Velcro fastening, fitted with padded shoulders for extra comfort. Narrow front doubles the stated protection at an overlap of approximately 15 cm. Prices: Same as for model 905.

## 903 – Optional extras

Description	Product code	Price
Pocket	900/001	£21.00
Embroidery in a position to be specified	9/B20	£19.00
Thyroid collar	951/05	£65.00

A downloadable order guide and tailor made measurements sheet is available on request. For colours please see page 26.



Model 903



Suspension systems



X-ray shielding



Operating lamps



Imaging accessories



Protective clothing

## > X-ray protective clothing continued

### 910 – *Lyta* Type half back apron

Provides front protection plus a degree at the back and to either side.  
Fastened at the back with elasticated straps plus cross-over ties with a front buckle.

Small for chest sizes 80 – 90 cm

Lead equivalent Front and back	Length	Width shoulder	Width hip	Product code	Price
0.25 / 0.25 mm	85 cm	40 cm	60 cm	910/22/085/S	£169.00
"	90 cm	"	"	910/22/090/S	£169.00
"	100 cm	"	"	910/22/100/S	£174.00
"	110 cm	"	"	910/22/110/S	£179.00
0.35 / 0.25 mm	85 cm	40 cm	60 cm	910/32/085/S	£179.00
"	90 cm	"	"	910/32/090/S	£179.00
"	100 cm	"	"	910/32/100/S	£184.00
"	110 cm	"	"	910/32/110/S	£189.00
0.50 / 0.25 mm	85 cm	40 cm	60 cm	910/52/085/S	£195.00
"	90 cm	"	"	910/52/090/S	£195.00
"	100 cm	"	"	910/52/100/S	£205.00
"	110 cm	"	"	910/52/110/S	£210.00

Medium for chest sizes 90 – 104 cm

Lead equivalent Front and back	Length	Width shoulder	Width hip	Product code	Price
0.25 / 0.25 mm	90 cm	48 cm	60 cm	910/22/090/M	£169.00
"	100 cm	"	"	910/22/100/M	£174.00
"	110 cm	"	"	910/22/110/M	£179.00
0.35 / 0.25 mm	90 cm	48 cm	60 cm	910/32/090/M	£179.00
"	100 cm	"	"	910/32/100/M	£184.00
"	110 cm	"	"	910/32/110/M	£189.00
0.50 / 0.25 mm	90 cm	48 cm	60 cm	910/52/090/M	£195.00
"	100 cm	"	"	910/52/100/M	£200.00
"	110 cm	"	"	910/52/110/M	£205.00

Large for chest sizes 104 – 120 cm

0.25 / 0.25 mm	90 cm	48 cm	75 cm	910/22/090/L	£194.00
"	100 cm	"	"	910/22/100/L	£201.00
"	110 cm	"	"	910/22/110/L	£206.00
"	120 cm	"	"	910/22/120/L	£212.00
0.35 / 0.25 mm	90 cm	48 cm	75 cm	910/32/090/L	£206.00
"	100 cm	"	"	910/32/100/L	£212.00
"	110 cm	"	"	910/32/110/L	£218.00
"	120 cm	"	"	910/32/120/L	£224.00
0.50 / 0.25 mm	90 cm	48 cm	75 cm	910/52/090/L	£225.00
"	100 cm	"	"	910/52/100/L	£230.00
"	110 cm	"	"	910/52/110/L	£236.00
"	120 cm	"	"	910/52/120/L	£242.00

### 910 – Optional extras

Description	Product code	Price
Pocket	900/001	£21.00
Embroidery in a position to be specified	9/B20	£19.00
Lumbar support belt elasticated type transfers weight to the hips	9/B15	£57.00

A downloadable order guide and tailor made measurements sheet is available on request. For colours please see page 26.



910

## 909 – LytaType cross back apron

Excellent design transfers weight from the shoulders to the hips.  
Elasticated flaps fasten at the sides.

### Small for chest sizes 80 – 90 cm

Lead equivalent Front and back	Length	Width shoulder	Width hip	Product code	Price
0.25 / 0.25 mm	85 cm	40 cm	60 cm	909/22/085/S	£186.00
"	90 cm	"	"	909/22/090/S	£186.00
"	100 cm	"	"	909/22/100/S	£191.00
"	110 cm	"	"	909/22/110/S	£196.00
0.35 / 0.25 mm	85 cm	40 cm	60 cm	909/32/085/S	£196.00
"	90 cm	"	"	909/32/090/S	£196.00
"	100 cm	"	"	909/32/100/S	£201.00
"	110 cm	"	"	909/32/110/S	£211.00
0.50 / 0.25 mm	85 cm	40 cm	60 cm	909/52/085/S	£212.00
"	90 cm	"	"	909/52/090/S	£212.00
"	100 cm	"	"	909/52/100/S	£217.00
"	110 cm	"	"	909/52/110/S	£222.00

### Medium for chest sizes 90 – 104 cm

0.25 / 0.25 mm	90 cm	48 cm	60 cm	909/22/090/M	£186.00
"	100 cm	"	"	909/22/100/M	£191.00
"	110 cm	"	"	909/22/110/M	£196.00
0.35 / 0.25 mm	90 cm	48 cm	60 cm	909/32/090/M	£196.00
"	100 cm	"	"	909/32/100/M	£201.00
"	110 cm	"	"	909/32/110/M	£206.00
0.50 / 0.25 mm	90 cm	48 cm	60 cm	909/52/090/M	£212.00
"	100 cm	"	"	909/52/100/M	£217.00
"	110 cm	"	"	909/52/110/M	£222.00

### Large for chest sizes 104 - 120cm

0.25 / 0.25 mm	90 cm	48 cm	75 cm	909/22/090/L	£214.00
"	100 cm	"	"	909/22/100/L	£220.00
"	110 cm	"	"	909/22/110/L	£226.00
0.35 / 0.25 mm	90 cm	48 cm	75 cm	909/32/090/L	£226.00
"	100 cm	"	"	909/32/100/L	£232.00
"	110 cm	"	"	909/32/110/L	£237.00
0.50 / 0.25 mm	90 cm	48 cm	75 cm	909/52/090/L	£244.00
"	100 cm	"	"	909/52/100/L	£250.00
"	110 cm	"	"	909/52/110/L	£256.00

## 911 – LytaType cross back apron

Excellent design transfers weight from the shoulders to the hips.  
Similar to model 909 but an elasticated front fastening belt.  
Prices: Same as for model 909.  
Measurements: Same as model 909.

### 909/911 – Optional extras

Description	Product code	Price
Pocket	900/001	£21.00
Embroidery in a position to be specified	9/B20	£19.00

A downloadable order guide and tailor made measurements sheet is available on request. For colours please see page 26.



909



Suspension systems



X-ray shielding



Operating lamps



Imaging accessories



Protective clothing

## > X-ray protective clothing continued

### 915 – *LytaType* jacket (vest)

Velcro fastened overlapping front provides all round protection.  
Front doubles the stated protection at an overlap of approximately 15 cm.

#### Small for chest sizes 80 – 90 cm

Lead equivalent Front and back	Length	Fit	Product code	Price
0.25 / 0.25 mm	52 cm	Slim fit	915/22/S	£202.00
0.25 / 0.35 mm	52 cm		915/23/S	£207.00
0.35 / 0.35 mm	52 cm		915/33/S	£223.00

#### Medium for chest sizes 90 – 104 cm

0.25 / 0.25 mm	58 cm	Medium fit	915/22/M	£202.00
0.25 / 0.35 mm	58 cm		915/23/M	£207.00
0.35 / 0.35 mm	58 cm		915/33/M	£223.00

#### Large for chest sizes 104 – 120 cm

0.25 / 0.25 mm	65 cm	Large fit	915/22/L	£213.00
0.25 / 0.35 mm	65 cm		915/23/L	£218.00
0.35 / 0.35 mm	65 cm		915/33/L	£235.00

A downloadable order guide and tailor made measurements sheet is available on request. For colours please see page 26.



915 & 919  
Pockets 900/001 shown  
are optional extras



915

### 919 – *LytaType* kilt (skirt)

Front doubles the stated protection at the overlap.  
Front overlap of up to 15 cm provides extra central protection. Fitted with Velcro and belt fastening.

#### Small for waist sizes 70 – 84 cm

Lead equivalent Front and back	Length	Product code	Price
0.25 / 0.25 mm	55 cm	919/22/S	£227.00
0.25 / 0.35 mm	55 cm	919/23/S	£235.00
0.35 / 0.35 mm	55 cm	919/33/S	£242.00

#### Medium for waist sizes 78 – 99 cm

0.25 / 0.25 mm	60 cm	919/22/M	£227.00
0.25 / 0.35 mm	60 cm	919/23/M	£235.00
0.35 / 0.35 mm	60 cm	919/33/M	£242.00

#### Large for waist sizes 90 – 115 cm

0.25 / 0.25 mm	65 cm	919/22/L	£239.00
0.25 / 0.35 mm	65 cm	919/23/L	£247.00
0.35 / 0.35 mm	65 cm	919/33/L	£255.00

A downloadable order guide and tailor made measurements sheet is available on request. For colours please see page 26.



919

## 917 – LytaType double-sided short top apron

An alternative to model 915 for use with Kilt model 919.  
Fitted with a shoulder clip and fastenings on both sides.

### Small for chest sizes 80 – 90 cm

Lead equivalent Front and back	Length	Width shoulder	Width hip	Product code	Price
0.25 / 0.25 mm	52 cm	40 cm	60 cm	917/22/S	£193.00
0.35 / 0.25 mm	52 cm	"	"	917/32/S	£201.00
0.35 / 0.35 mm	52 cm	"	"	917/33/S	£212.00

### Medium for chest sizes 90 – 104 cm

0.25 / 0.25 mm	58 cm	48 cm	60 cm	917/22/M	£193.00
0.35 / 0.25 mm	58 cm	"	"	917/32/M	£201.00
0.35 / 0.35 mm	58 cm	"	"	917/33/M	£212.00

### Large for chest sizes 104 – 120 cm

0.25 / 0.25 mm	70 cm	48 cm	75 cm	917/22/L	£203.00
0.35 / 0.25 mm	70 cm	"	"	917/32/L	£212.00
0.35 / 0.35 mm	70 cm	"	"	917/33/L	£223.00



917

## 915/919/917 – Optional extras

Description	Product code	Price
Pocket	900/001	£21.00
Embroidery in a position to be specified	9/B20	£19.00

A downloadable order guide and tailor made measurements sheet is available on request. For colours please see page 26.

## 921 – LytaType demi apron

Lower body aprons fitted with a soft vinyl covered spring waistband.

Lead equivalent	Size	Length	Width	Product code	Price
0.5 mm	Toddler	25 cm	25 cm	921/05/01	£69.00
	Child	30 cm	30 cm	921/05/02	£84.00
	Adult	37 cm	40 cm	921/05/03	£97.00
	Large adult	40 cm	45 cm	921/05/04	£106.00
Wall rack - holds a set of 4 demi-aprons model 921				109/417	£146.00

## 921-V – LytaType demi apron

Lower body aprons fitted with a Velcro fastening belt.

Lead equivalent	Size	Length	Width	Product code	Price
0.5 mm	Toddler	25 cm	25 cm	921-V/05/01	£61.00
	Child	30 cm	30 cm	921-V/05/02	£79.00
	Adult	37 cm	40 cm	921-V/05/03	£85.00
	Large adult	40 cm	45 cm	921-V/05/04	£99.00

For colours please see page 26.



921



Suspension systems



X-ray shielding



Operating lamps



Imaging accessories



Protective clothing

## > X-ray protective clothing continued

### 951/05 – Thyroid collar

Collar and bib type for the best fit and comfort.

- Soft flexible and adjustable for any neck size.
- Provides optimum protection to the thyroid area.
- Lead equivalent 0.5 mm. Velcro closure.

Description	Product code	Price
Thyroid collar	951/05	£65.00

For colours please see page 26.



951/05

### 953/05 – Thyroid collar

One-piece design without edge binding.

- Very soft and flexible.
- Lead equivalent 0.5 mm.
- Velcro closure for any neck size.

Description	Product code	Price
Thyroid collar	953/05	£32.00

For colours please see page 26.



953/05

### 278 – Ovary shields

Provides maximum protection without interfering with diagnostically important areas of film.  
1.0 mm Pb equivalent shields adjust in a fan-wise fashion to fit the pelvis.

Description	Product code	Price
Ovary shields set of 3 sizes	278/SET	£250.00



278

### 299 – T shape gonad shields

2.0 mm lead centre section encased in tough plastic.

Description	Product code	Price
T shape shields set of 3 sizes	299/SET	£264.00



299



## 265 – Radiation protective glasses

Optically correct 0.75 mm Pb lead glass lenses with 0.25 mm lead foil side protection.

Description	Product code	Price
Radiation protective glasses	265/2000A	Price on request



265/2000A

## 215 – Seamless x-ray gloves

Moulded and washable inside and out.  
Length: approximately 40 cm long.

Description	Product code	Price
0.5 mm lead equivalent medium size gloves, per pair	215/055/G2	Price on request



215/055/G2

## Apron storage racks Model 100

### 100 – Multiform apron wall console

A swivel hanger rack that prolongs the life of protective clothing.

- Occupies minimal wall space.
- Clothing is clearly arranged.
- Shaped hangers extend the service life of protective clothing.
- Hangers fan out from the wall for immediate access, or fold flat when fully loaded.
- Left and right racks together provide storage for up to 10 aprons.



100/5L & 100/5R

Description	Product code	Price
1 swivel arm (180° movement)	100/1	£70.00
2 arms swivel to the right	100/2R	£90.00
2 arms swivel to the left	100/2L	£90.00
3 arms swivel to the right	100/3R	£105.00
3 arms swivel to the left	100/3L	£105.00
4 arms swivel to the right	100/4R	£127.00
4 arms swivel to the left	100/4L	£127.00
5 arms swivel to the right	100/5R	£149.00
5 arms swivel to the left	100/5L	£149.00



100/1



100/2L

100/2R



100/3L

100/3R



100/4L

100/4R



100/5L

100/5R

## > Apron storage racks continued

### 102/C – Mobile swivel arm apron rack\*

Ideal for departments where wall racks cannot be installed.

- Hangers fan so aprons can be selected, removed and replaced with ease.
- Racks are compact and can be parked at any convenient location and moved as required.
- The hanger profile provides correct storage for protective clothing.

Dimensions: 61 cm wide x 64 cm deep x 155 cm high.

Description	Product code	Price
Rack for up to 6 garments	102/C/06	£400.00
Rack for up to 11 garments	102/C/11	£490.00



102/C/11

### 100 – Kilt / skirt hooks

A pair of hooks can be simply added to a swivel hanger at any time.

- Kilts with internal fitted loops can be suspended from the hooks.
- Use with models 100 and 102.

Description	Product code	Price
Hooks, per pair	100/427	£24.00



100/427

### 103 – Mobile apron rail\*

Accommodates aprons on optional coat hangers.

Dimensions: 57 cm wide x 61 cm deep x 140cm high.

Description	Product code	Price
Mobile Apron Rail	103	£263.00
Coat hanger	106	£26.00



103

\* Note: Care should be taken when moving a mobile rack when fully laden with protective garments, as they could swing from side-to-side and cause the rack to overbalance.

# Terms and conditions

## Acceptance of Orders

Orders are accepted subject to the following business terms and conditions: -

## Price List

All prices listed are in GB Pounds Sterling, are provisional only and are subject to alteration without notice. Unless otherwise stated, prices are for goods Free Carrier Harlow (FCA) in accordance with the International Chamber of Commerce (ICC) trade terms: Incoterms 2010. Prices are exclusive of VAT. VAT if applicable will be charged at the current rate.

## Terms of Payment

Credit accounts are strictly net cash payable within 30 days of invoice date.

## Carriage

As a general rule carriage will be charged at cost, with shipments made at the purchaser's risk. If transport insurance is requested and undertaken it will be charged to the purchaser as an additional cost. Unless we are given specific instructions we select the manner and route of shipment.

## Damage or Loss in Transit

Any claim made concerning damage or shortages must be made in writing to us within 3 days of delivery of the goods. Any claim for non-delivery must be made in writing to us within 14 days from the date of our invoice. Original packaging must be retained.

## Retention of Title

Notwithstanding that delivery of the goods has been made, they remain the property of Kenex until payment is made in full.

## Time of Delivery

Every effort will be made to adhere to quoted delivery times. However, no liability can be accepted for any losses incurred by the purchaser for a failure to deliver within the stated period. Delays shall not entitle the purchaser to cancel the order nor to claim damages. We reserve the right to make partial deliveries.

## Guarantee

We will make good at our discretion by repair or by the supply of a replacement, defects that appear in the goods of our manufacture and arise solely from faulty workmanship or materials, provided that the goods are returned to us carriage paid within one year from the date of delivery. Goods subject to fair wear & tear, misuse or inadequate maintenance are excluded. Any claim under this guarantee shall be limited to the cost of the goods.

## Limitation of Liability

Other than the statements made in Kenex literature, no warranty is expressed or implied as to the suitability of any product for any purpose. Purchasers must satisfy themselves on this point. Persons authorised to select or use Kenex X-ray protective garments, shields or other products must be aware of the dangers of exposure to radiation.

## Specifications & Descriptions

Technical data, dimensions, weights and illustrations are typical and not binding. Kenex reserve the right to improve or amend any product without notice.

## Patents, trademarks, copyright and designs

Kenex and LytaType are registered trademarks of Kenex (Electro-Medical) Limited. Kenex products are covered by patents and/or registered designs. Copyright: All rights reserved. No part of this publication may be reproduced without prior written permission.



*LytaType*

## Quality management systems and certification

Kenex is compliant and certified according to the following Standards and Directives, regarding design and manufacture of medical devices: -

93/42/EEC (Medical device directive)  
89/686/EEC (Personal protective directive)  
ISO 9001 (Quality management system requirements)  
ISO 13485 (Quality management systems for medical devices)  
ISO 14971 (Application of risk management systems to medical devices)  
IEC 60601 (Medical electrical equipment – basic safety and essential performance)  
IEC 61331 (Protective devices against diagnostic medical X-radiation)  
IEC 60068-2-1 (Environmental testing: cold, dry heat, damp heat)

Where appropriate Kenex products are CE certified to 93/42/EEC and most are UL classified.



**Kenex (Electro-Medical) limited was established in 1970**



Kenex (Electro-Medical) Limited  
Unit 17, RO24 Greenway  
Harlow Business Park  
Harlow, Essex  
CM19 5QB  
England

T: +44 (0)1279 417241  
F: +44 (0)1279 443749  
E: [kenex@kenex.co.uk](mailto:kenex@kenex.co.uk)  
[www.kenex.co.uk](http://www.kenex.co.uk)